

VORTAC TWF	APP CRS	Rwy Idg	8703
115.8	248°	TDZE	4154
Chan 105		Apt Elev	4154

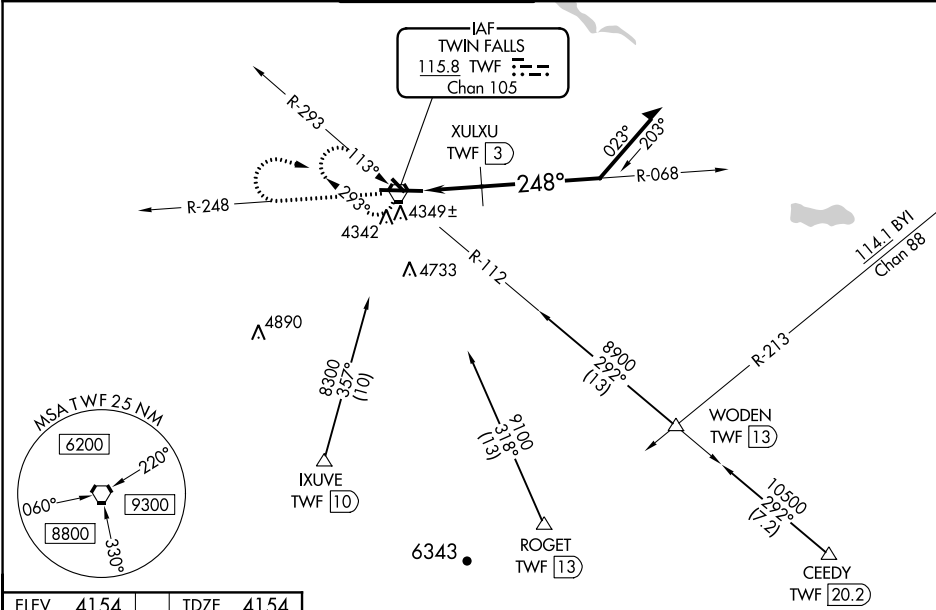
VOR RWY 26  
JOSLIN FIELD-MAGIC VALLEY RGNL (TWF)

**⚠** Night landing: Rwy 30 NA. VDP NA with Jerome altimeter setting. When local altimeter setting not received, use Jerome altimeter setting and increase all MDA 60 feet; increase S-26 Cat A visibility ¼ mile, Cat C/D ½ mile, Circling Cat C ¼ mile, and XULXU FIX S-26 Cat C/D ½ mile. For inop MALSR, increase S-26 Cat C/D visibility to 2½ miles; when using Jerome altimeter setting increase XULXU FIX S-26 Cat C/D visibility to 1½ mile.

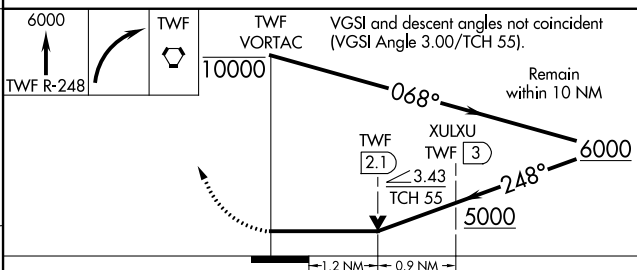
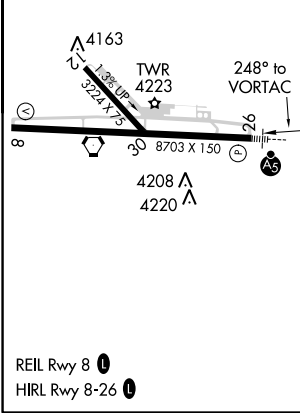
**MALSR**

**MISSED APPROACH:** Climb to 6000 on TWF VORTAC R-248 then right turn direct TWF VORTAC and hold.

ASOS 135.025	TWIN FALLS APP CON★ 126.7 353.75	TWIN FALLS TOWER★ 118.2 (CTAF) 0 317.5	GND CON 121.7	CLNC DEL 123.65	UNICOM 122.95
-----------------	-------------------------------------	---	------------------	--------------------	------------------



ELEV 4154	TDZE 4154
-----------	-----------



CATEGORY	A	B	C	D
S-26	5000-½ 846 (900-½)	5000-¾ 846 (900-¾)	5000-1⅞ 846 (900-1⅞)	846 (900-1⅞)
<b>C</b> CIRCLING	5000-1¼ 846 (900-1¼)	5100-2¾ 946 (1000-2¾)	5100-3 946 (1000-3)	5100-3 946 (1000-3)
XULXU FIX MINIMUMS				
S-26	4600-½ 546 (600-½)	446 (500-½)	4600-7/8 546 (600-7/8)	446 (500-7/8)
<b>C</b> CIRCLING	4700-1 546 (600-1)	4780-1 626 (700-1)	5100-2¾ 946 (1000-2¾)	5100-3 946 (1000-3)

NW-1, 31 DEC 2020 to 28 JAN 2021

NW-1, 31 DEC 2020 to 28 JAN 2021