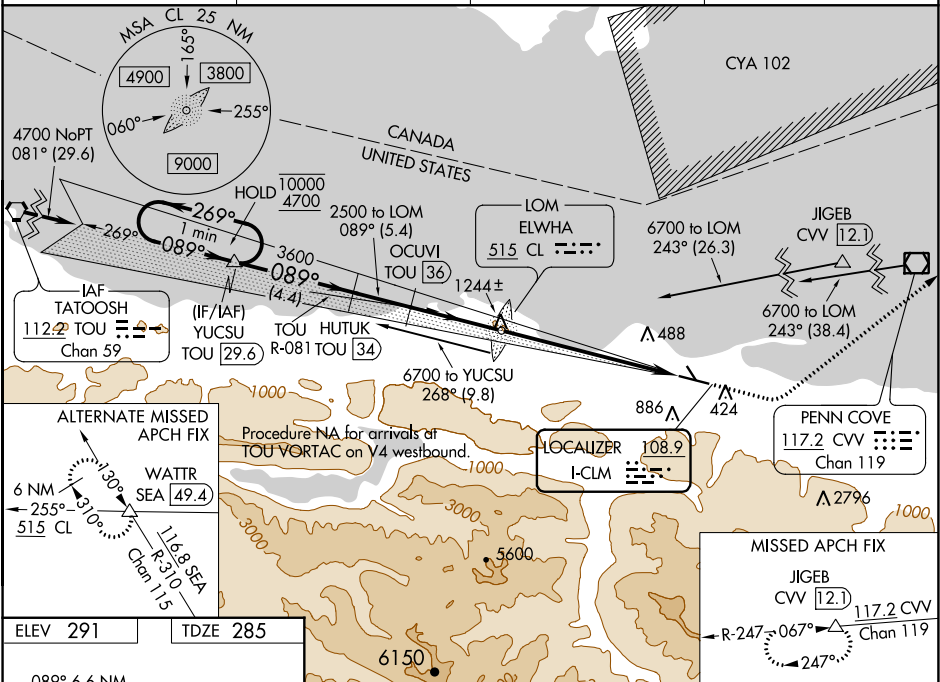


LOC I-CLM 108.9	APP CRS 089°	Rwy Idg TDZE Apt Elev	6347 285 291
---------------------------	------------------------	-----------------------------	---

ILS or LOC RWY 8
WILLIAM R FAIRCHILD INTL (CLM)

DME required.	MALSR	MISSED APPROACH: Climb to 1000 then climbing left turn to 5400 on heading 030° and on CVV VOR/DME R-247 to JIGEB/ CVV 12.1 DME and hold, continue climb-in-hold to 5400.
Circling NA south of Rwy 8-26. Night Landing: Rwy 13, 31 NA. DME from TOU VORTAC. Simultaneous reception of I-CLM and TOU DME required. For inop ALS, increase S-LOC 8 Cat C/D visibility to 1 3/4 mile.		

ASOS 135.175	WHIDBEY APP CON 118.2 285.65	CLNC DEL 124.15	UNICOM 122.975 (CTAF)
------------------------	--	---------------------------	---------------------------------



ELEV 291	TDZE 285
089° 6.6 NM from FAF	
MIRL Rwy 8-26	
REIL Rwy 26	
FAF to MAP 6.6 NM	
Knots	60 90 120 150 180
Min:Sec	6:36 4:24 3:18 2:38 2:12

VGSi and ILS glidepath not coincident (VGSi Angle 3.00/TCH 50).					<div>1000 ↑</div> <div>5400 hdg 030°</div> <div>CW R-247</div> <div>JIGEB △</div>						
One Minute Holding Pattern		YUCSU TOU <u>29.6</u>		HUTUK TOU <u>34</u>		OCUVI TOU <u>36</u>		CL LOM ELVHA		*LOC only	
10000 4700		←269° 089°→		089° 3600		3500		2483		*2500	
GS 3.00° TCH 54		4.4 NM		2.1 NM		3.3 NM		6.6 NM			
CATEGORY	A		B		C		D				
S-ILS 8			496-1/2		211 (300-1/2)						
S-LOC 8	900-1/2		615 (700-1/2)		900-1 3/8		615 (700-1 3/8)				
CIRCLING	900-1		609 (700-1)		900-1 3/4 609 (700-1 3/4)		1000-2 1/4 709 (800-2 1/4)				

NW-1, 31 DEC 2020 to 28 JAN 2021

NW-1, 31 DEC 2020 to 28 JAN 2021