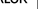

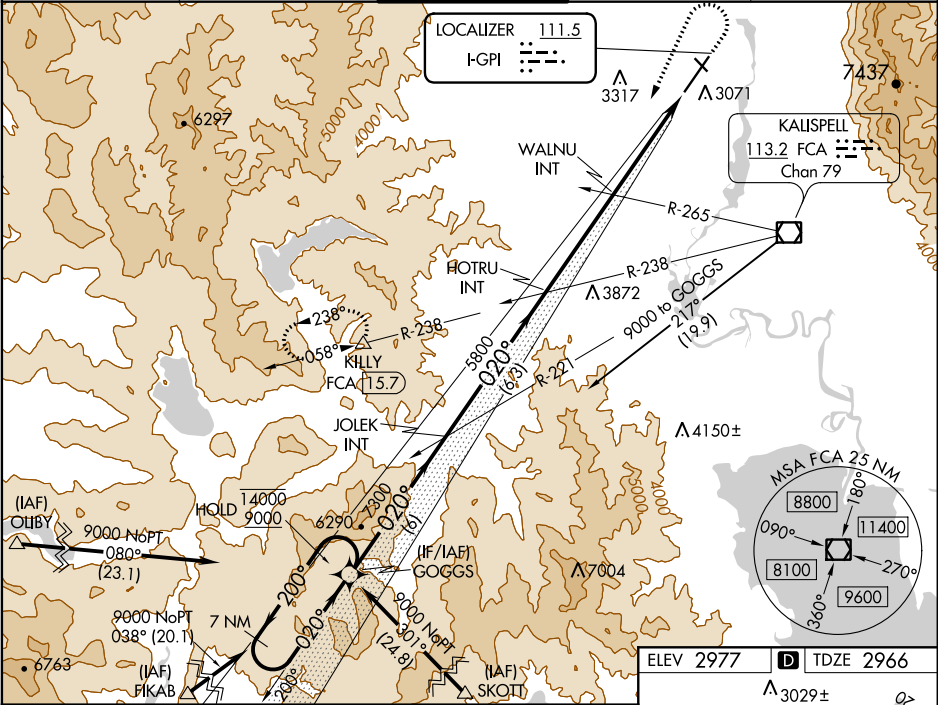


LOC I-GPI	APP CRS	Rwy Idg	9007
111.5	020°	TDZE	2966
		Apt Elev	2977

ILS or LOC RWY 2

GLACIER PARK INTL (GPI)

DME required. RNAV 1-GPS or RADAR required for procedure entry.		MALSR	MISSED APPROACH: Climb to 4100 then climbing left turn to 12000 on heading 190° and FCA VOR/DME R-238 to KILLY/15.7 DME and hold, continue climb-in-hold to 12000.	
Inop table does not apply to S-LOC 2 Cats C/D.				
-15°C				
ATIS 132.625	SALT LAKE CENTER 133.4 285.4	GLACIER TOWER★ 124.55 (CTAF) 	GND CON 121.6	UNICOM 122.95



7 NM Holding Pattern		GOGGS		JOLEK INT		HOTRU INT		WALNU INT		4100 ↑ hdg 190°		12000 FCA R-238		KILLY △	
14000 ← 200°		020° →		020°		020°		020°		*LOC only					
9000		7300		5800		5800		*4440							
GS 3.00° TCH 51				6 NM		6.3 NM		4.3 NM		4.5 NM					
CATEGORY		A		B		C		D							
S-ILS 2				3166-1/2		200 (200-1/2)									
S-LOC 2		4440-3/4 1474 (1500-3/4)		4440-1 1474 (1500-1)		4440-3 1474 (1500-3)									
CIRCLING		4440-1 1/4 1463 (1500-1 1/4)		4440-1 1/2 1463 (1500-1 1/2)		4440-3 1463 (1500-3)									
WALNU FIX MINIMUMS (DUAL VOR RECEIVERS REQUIRED)															
S-LOC 2		3520-1/2 543 (600-1)		554 (600-1/2) 603 (700-1)		3520-1 1/8 663 (700-1 1/4)		554 (600-1 1/8) 783 (800-2 1/2)							
CIRCLING		3520-1 543 (600-1)		3580-1 603 (700-1)		3640-1 3/4 663 (700-1 1/4)		3760-2 1/2 783 (800-2 1/2)							

