




APP CRS	Rwy Idg	<b>3510</b>
<b>301°</b>	TDZE	<b>2974</b>
	Apt Elev	<b>2977</b>

RNAV (GPS) RWY 30  
GLACIER PARK INTL (GPI)

RNP APCH.

  Rwy 30 helicopter visibility reduction below  $\frac{3}{4}$  SM NA.  
 -15°C

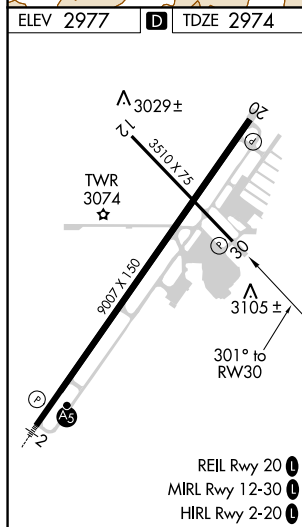
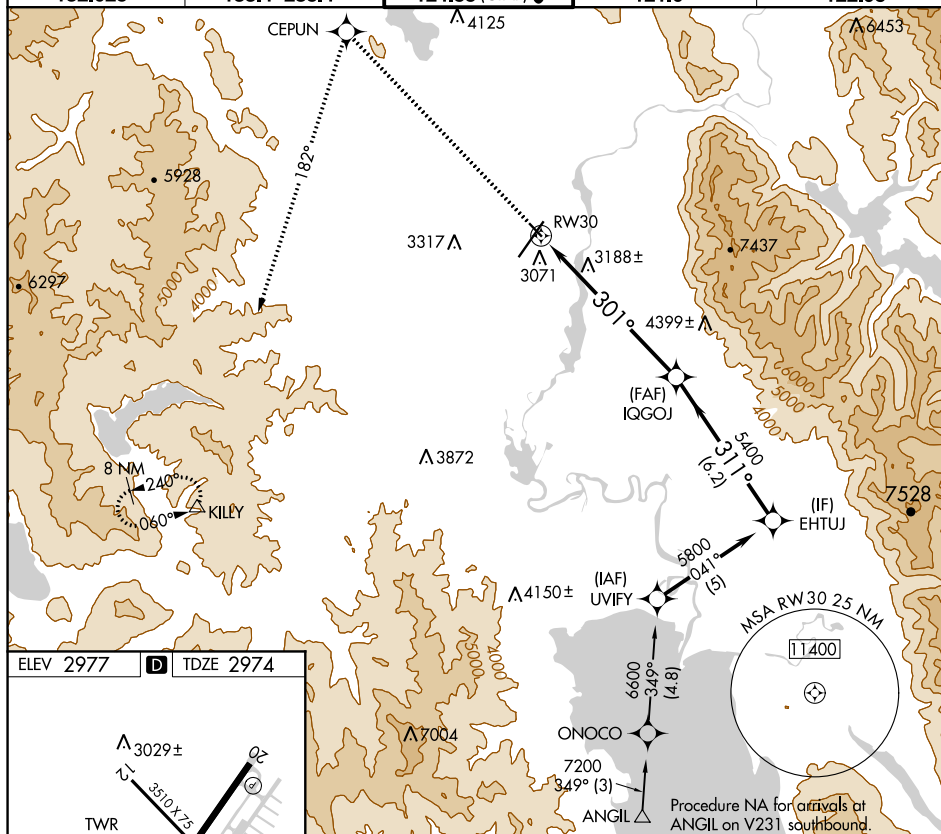
**MISSED APPROACH:** Climb to 12000 direct CEPUN and left turn via track 182° to KILLY and hold, continue climb-in-hold to 12000.

ATIS
132.625

SALT LAKE CENTER  
133.4 285.4

GLACIER TOWER★  
124.55 (CTAF) **L**

GND COM  
121.6

UNICOM  
122.95

12000 ↑	CEPUN ✦	182° tr	KILLY △	VGSJ and descent angles not coincident (VGSJ Angle 3.50/TCH 26)		EHTUJ
				Procedure Turn NA		
CATEGORY	A		B		C	D
LNNAV MDA	3500-1 526 (600-1)		3500-1½ 526 (600-1½)			
<b>C</b> CIRCLING	3520-1 543 (600-1)	3580-1 603 (700-1)	3640-1¼ 663 (700-1¼)	3760-2½ 783 (800-2½)		

GLACIER PARK INTL (GPI)  
RNAV (GPS) RWY 30