




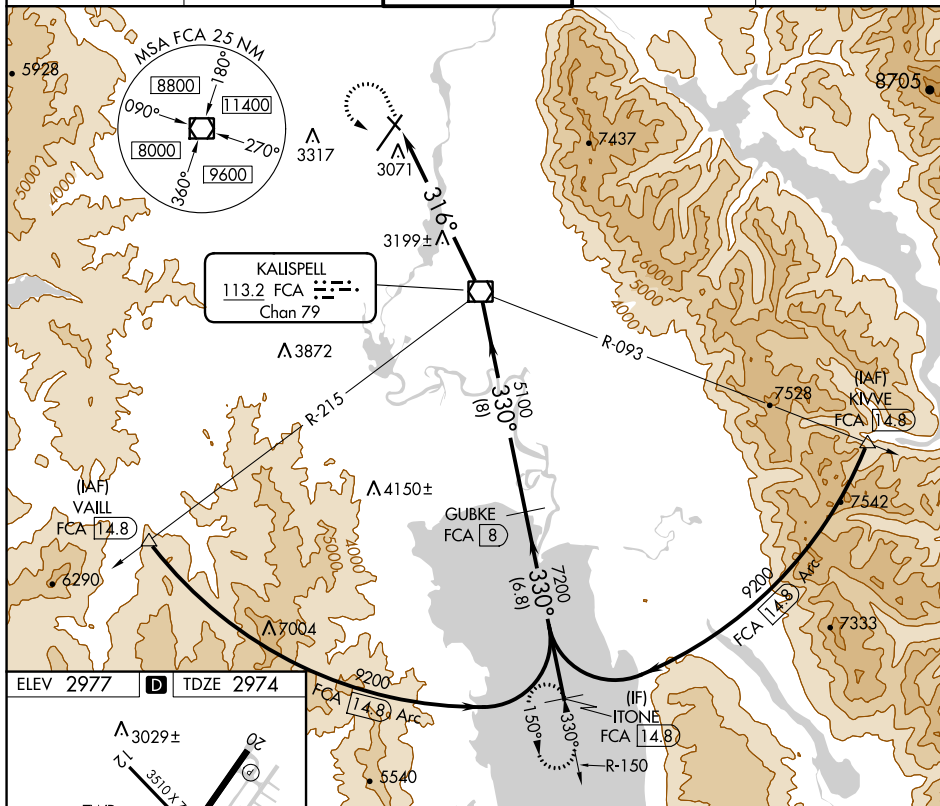
VOR/DME FCA 113.2 Chan 79	APP CRS 316°	Rwy Idg 3510 TDZE 2974 Apt Elev 2977
---	------------------------	---

VOR/DME RWY 30
GLACIER PARK INTL (GPI)

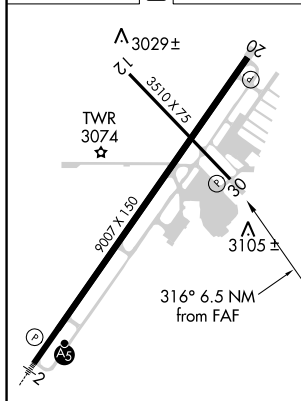
	Helicopter visibility reduction below 1 SM not authorized. When VGSI inoperative, straight-in
	minimums not authorized at night.
	-15°C

MISSED APPROACH: Climb to 4000 then climbing left turn to 9300 via heading 130° and FCA VOR/DME R-150 to ITONE/14.8 DME and hold, continue climb-in-hold to 9300.

ATIS 132.625	SALT LAKE CENTER 133.4 285.4	GLACIER TOWER* 124.55 (CTAF) 0	GND CON 121.6	UNICOM 122.95
------------------------	--	--	-------------------------	-------------------------



ELEV 2977	D	TDZE 2974
-----------	----------	-----------



REIL Rwy 20 **L**
MIRL Rwy 12-30 **L**
HIRL Rwy 2-20

4000 ↑	9300 hdg 130°	FCA R-150	ITONE FCA 14.8	Descent angles NA.		ITONE FCA 14.8
CATEGORY	A	B	C		D	
S-30	3480-1	506 (600-1)	3480-1½		506 (600-1½)	
C CIRCLING	3520-1 543 (600-1)	3580-1 603 (700-1)	3640-1¾ 663 (700-1¾)		3760-2½ 783 (800-2½)	

GLACIER PARK INTL (GPI)
VOR/DME RWY 30