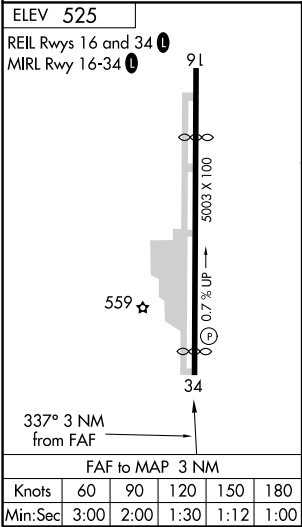
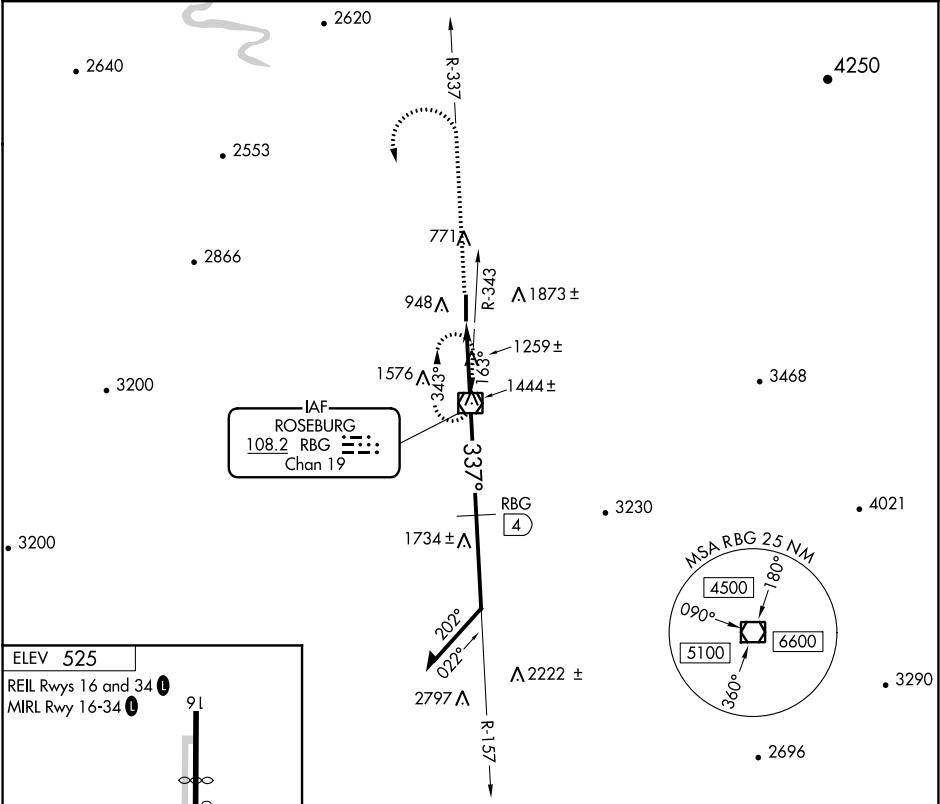


VOR/DME RBG	APP CRS	Rwy Idg	N/A
<b>108.2</b>	<b>337°</b>	TDZE	N/A
Chan <b>19</b>		Apt Elev	<b>525</b>

VOR-A  
ROSEBURG RGNL (RBG)

<div><div>▼</div><div>▲ NA</div></div> <div>Circling not authorized east of Rwy 16-34. Procedure NA at night. Rwy 34 helicopter visibility below 1 SM NA.</div>	MISSED APPROACH: Climb to 4000 via RBG R-337 within 1.5 NM; then climbing left turn to 5000 direct RBG VOR/DME and hold.
---	--

ASOS <b>135.475</b>	SEATTLE CENTER <b>127.55 239.0</b>	UNICOM <b>122.8</b> (CTAF) <b>0</b>
------------------------	---------------------------------------	--



4000	5000	RBG	RBG R-337	RBG VOR/DME	157°	Remain within 10 NM	5000
					RBG 4		
					3800*	3800	
					3 NM	4 NM	
CATEGORY	A	B	C	D			
CIRCLING	2600-1¼ 2075 (2100-1¼)	2600-1½ 2075 (2100-1½)	2600-3 2075 (2100-3)				
CIRCLING	1740-1¼ 1215 (1300-1¼)	1740-1½ 1215 (1300-1½)	1740-3 1215 (1300-3)	1920-3 1395 (1400-3)			