

LOC/DME I-HQM	APP CRS	Rwy Idg	5000
<b>108.7</b>	<b>241°</b>	TDZE	<b>16</b>
Chan 24		Apt Elev	<b>18</b>

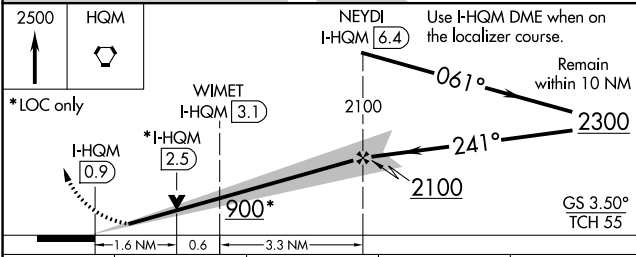
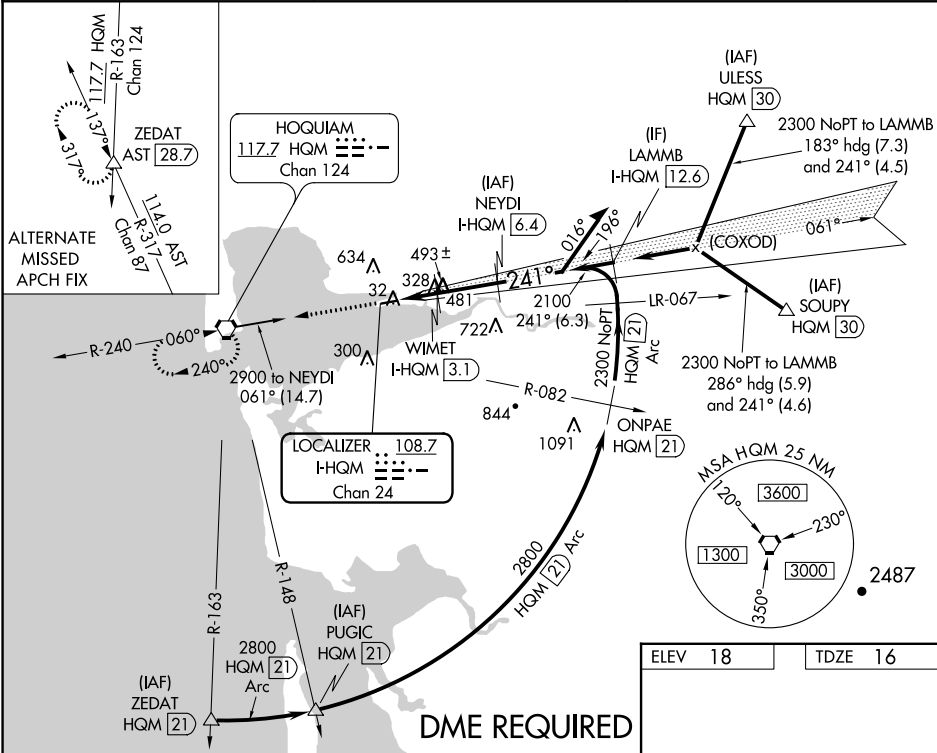
ILS or LOC/DME RWY 24  
BOWERMAN (HQM)

**⚠** When local altimeter setting not received, procedure NA. For inop MALS, increase S-ILS Cat C visibility to ¾ mile and S-LOC Cat C visibility to 1 ½ mile. Circling NA northwest of Rwy 6-24.

**MALS**

**MISSED APPROACH:** Climb to 2500 direct HQM VORTAC and hold.

ASOS <b>135.775</b>	SEATTLE CENTER <b>128.3 269.0</b>	UNICOM <b>122.7 (CTAF) 0</b>
------------------------	--------------------------------------	---------------------------------



CATEGORY	A	B	C	D
S-ILS 24	216-½ 200 (200-½)	286-½ 270 (300-½)	NA	NA
S-LOC 24	580-½ 564 (600-½)	580-1¼ 564 (600-1¼)	NA	NA
CIRCLING	580-1 562 (600-1)	580-1½ 562 (600-1½)	NA	NA

ELEV 18 TDZE 16

REIL Rwy 6 0  
HIRL Rwy 6-24 0

NW-1, 31 DEC 2020 to 28 JAN 2021

NW-1, 31 DEC 2020 to 28 JAN 2021