

HOQUIAM, WASHINGTON

AL-889 (FAA)

19003

WAAS CH <b>82015</b> <b>W06A</b>	APP CRS <b>061°</b>	Rwy Idg <b>5000</b> TDZE <b>18</b> Apt Elev <b>18</b>
--	------------------------	---

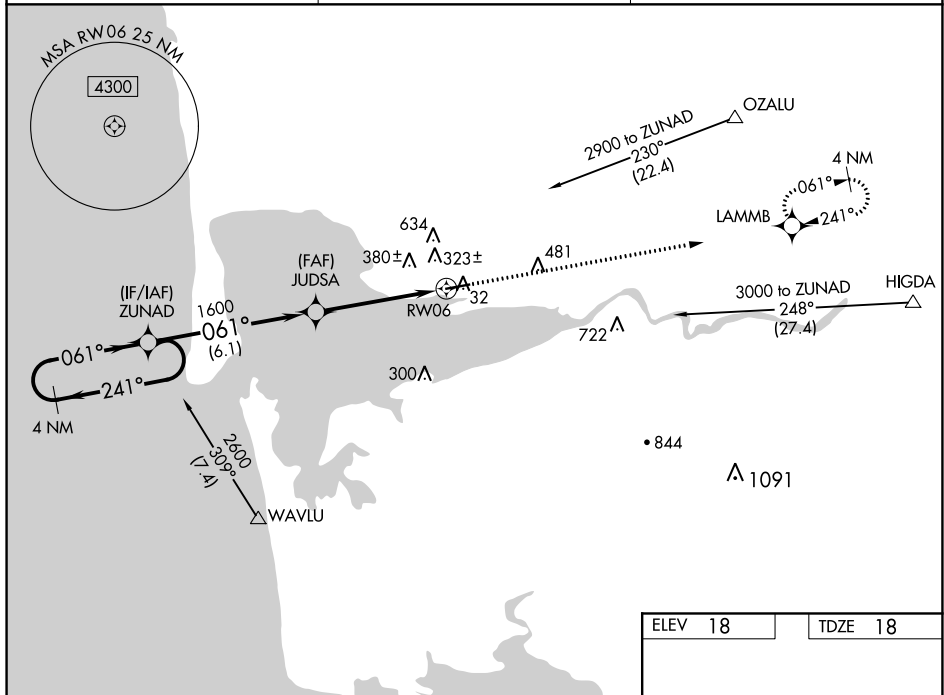
RNAV (GPS) RWY 6  
BOWERMAN (HQM)

RNP APCH.

**T** Circling NA northwest of Rwy 6-24. For uncompensated Baro-VNAV systems, LNAV/VNAV NA below -15°C (5°F) or above 48°C (118°F). Rwy 6 helicopter visibility reduction below 1 SM NA. When local altimeter setting not received, procedure NA.


**MISSED APPROACH:** Climb to 2900 direct LAMMB and hold.

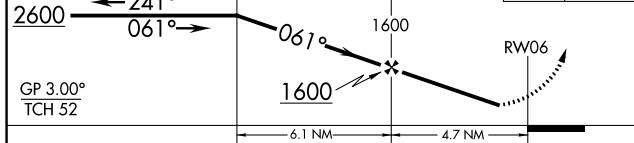
ASOS <b>135.775</b>	SEATTLE CENTER <b>128.3 269.0</b>	UNICOM <b>122.7 (CTAF) 0</b>
------------------------	--------------------------------------	---------------------------------



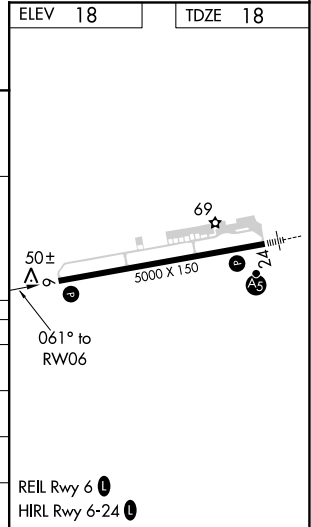
NW-1, 31 DEC 2020 to 28 JAN 2021

NW-1, 31 DEC 2020 to 28 JAN 2021

4 NM Holding Pattern	VGSI and RNAV glidepath not coincident (VGSI Angle 3.00/TCH 40). ZUNAD	2900 ↑	LAMMB 
2418 ←	JUDSA		



CATEGORY	A	B	C	D
LPV DA	308-1 290 (300-1)			
LNAV/ VNAV DA	758-2½ 740 (800-2½)			
LNAV MDA	620-1 602 (700-1)	620-1¾ 602 (700-1¾)	620-2 602 (700-2)	
CIRCLING	620-1 602 (700-1)	620-1¾ 602 (700-1¾)	640-2 622 (700-2)	



HOQUIAM, WASHINGTON  
Amdt 1B 03JAN19

46°58'N-123°56'W

BOWERMAN (HQM)

## RNAV (GPS) RWY 6