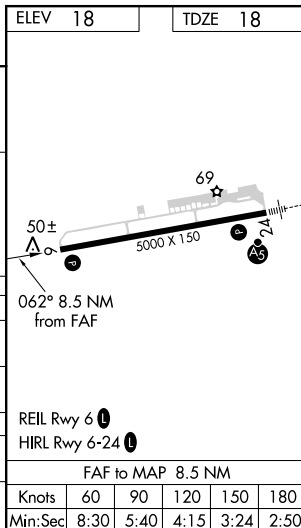


17341

VOR RWY 6
BOWERMAN (HQM)

MISSED APPROACH: Climbing right turn to 2500 direct HQM VORTAC and hold.

UNICOM
122.7 (CTAF) **L**

CATEGORY	A	B	C	D
S-6	760-1 742 (800-1)	760-1¼ 742 (800-1¼)	760-2¼ 742 (800-2¼)	760-2½ 742 (800-2½)
CIRCLING	760-1 742 (800-1)	760-1¼ 742 (800-1¼)	760-2¼ 742 (800-2¼)	760-2½ 742 (800-2½)
TEYKU FIX MINIMUMS				
S-6	640-1 622 (700-1)		640-1¾ 622 (700-1¾)	640-2 622 (700-2)
CIRCLING	640-1 622 (700-1)		640-1¾ 622 (700-1¾)	640-2 622 (700-2)

BOWERMAN (HQM)
VOR RWY 6

NW-1, 31 DEC 2020 to 28 JAN 2021