

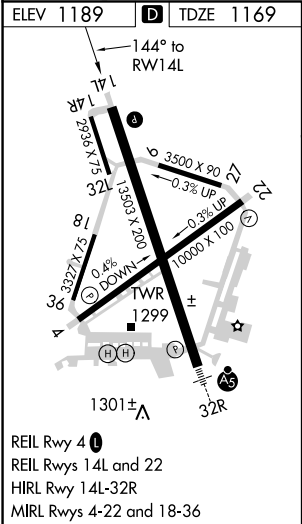
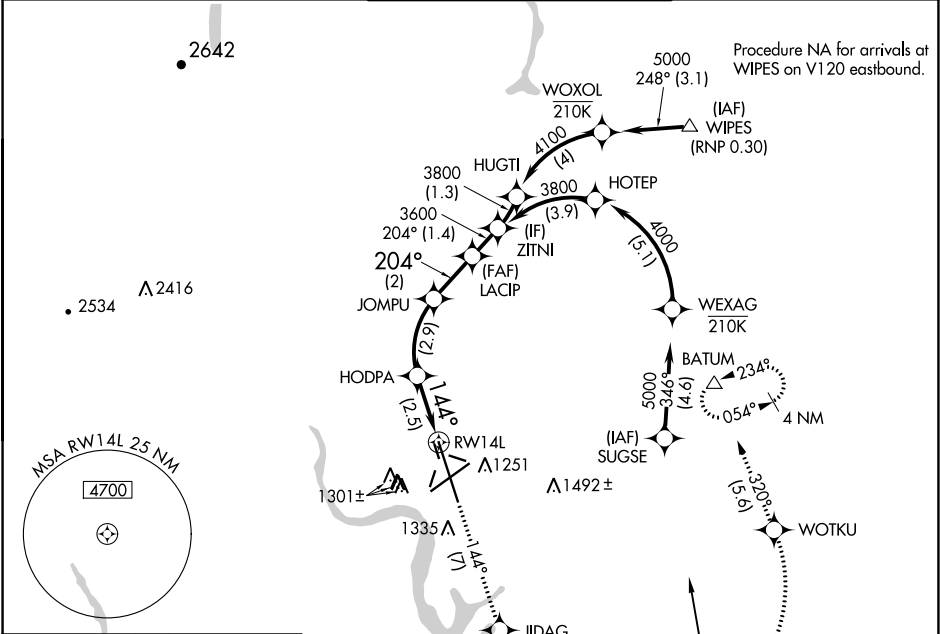
APP CRS	Rwy Idg	13503
144°	TDZE	1169
	Apt Elev	1189

RNAV (RNP) Z RWY 14L

GRANT COUNTY INTL (MWH)

<div><div></div><div>For uncompensated Baro-VNAV systems, procedure NA below -17°C (2°F) or above 47°C (116°F). RF required. GPS required.</div></div>	MISSED APPROACH: Climb to 4000 on track 144° to JIDAG left turn to WOTKU and track 320° to BATUM and hold.
--	--

ATIS 119.05	GRANT COUNTY APP CON ★ 126.4 379.95	GRANT COUNTY TOWER ★ 118.25 (CTAF) 0 257.8 (EAST) 128.0 257.8 (WEST)	GND CON 121.9	UNICOM 122.95
----------------	--	--	------------------	------------------



ELEV 1189		D	TDZE 1169
144° to RW14L		3500 X 90	
0.3% UP		13503 X 200	
0.4% DOWN		10000 X 100	
TWR 1299		1301±	
32R		32L	
GP 3.00°		TCH 52	
VGS1 and RNAV glidepath not coincident (VGS1 Angle 3.00/TCH 75).		4000 JIDAG WOTKU BATUM	
ZITNI LACIP JOMPU HODPA		tr 144° tr 320°	
3800 204° 3600 2976		2022 RW14L	
GP 3.00°		144°	
1.4 NM		2 NM	
2.9 NM		2.5 NM	
CATEGORY	A	B	C
RNP 0.10 DA	1419-¾	250 (300-¾)	
RNP 0.30 DA	1479-1	310 (300-1)	
AUTHORIZATION REQUIRED			