

APP CRS	Rwy Idg	13492
324°	TDZE	1167
	Apt Elev	1189

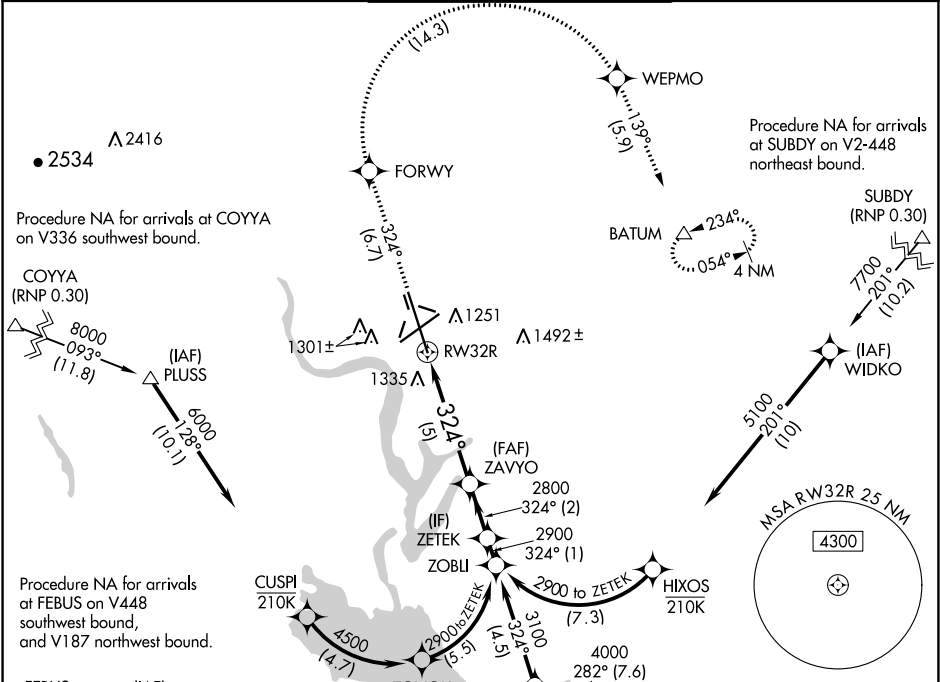
RNAV (RNP) Z RWY 32R
GRANT COUNTY INTL (MWH)

⚠ For uncompensated Baro-VNAV systems, procedure NA below -17°C (2°F) or above 46°C (114°F). RF required. GPS required. For inoperative MALSR increase RNP 0.10 visibility all Cats to RVR 4000, increase RNP 0.30 visibility all Cats to RVR 6000.

MALSR

MISSED APPROACH: Climb to 4000 on track 324° to FORWY right turn to WEPMO and track 139° to BATUM and hold.

ATIS 119.05	GRANT COUNTY APP CON ★ 126.4 379.95	GRANT COUNTY TOWER ★ 118.25 (CTAF) 0 257.8 (EAST) 128.0 257.8 (WEST)	GND CON 121.9	UNICOM 122.95
-----------------------	---	--	-------------------------	-------------------------



Procedure NA for arrivals at UPBOB on V357 southeast bound.

4000 FORWY WEPMO tr 139° BATUM

ZAVYO ZETEK

Procedure Turn NA

VGSI and RNAV glidepath not coincident (VGSI Angle 3.00/TCH 76).

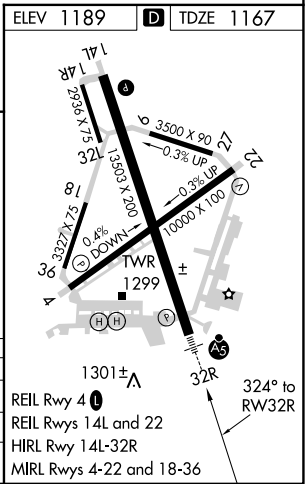
RW32R

2800 324° 2900 2800

GP 3.00° TCH 55

CATEGORY	A	B	C	D
RNP 0.10 DA	1417/24 250 (300-½)			
RNP 0.30 DA	1533/40 366 (400-¾)			

AUTHORIZATION REQUIRED



NW-1, 31 DEC 2020 to 28 JAN 2021

NW-1, 31 DEC 2020 to 28 JAN 2021