

APP CRS  
**036°**

Rwy Idg  
TDZE  
Apt Elev

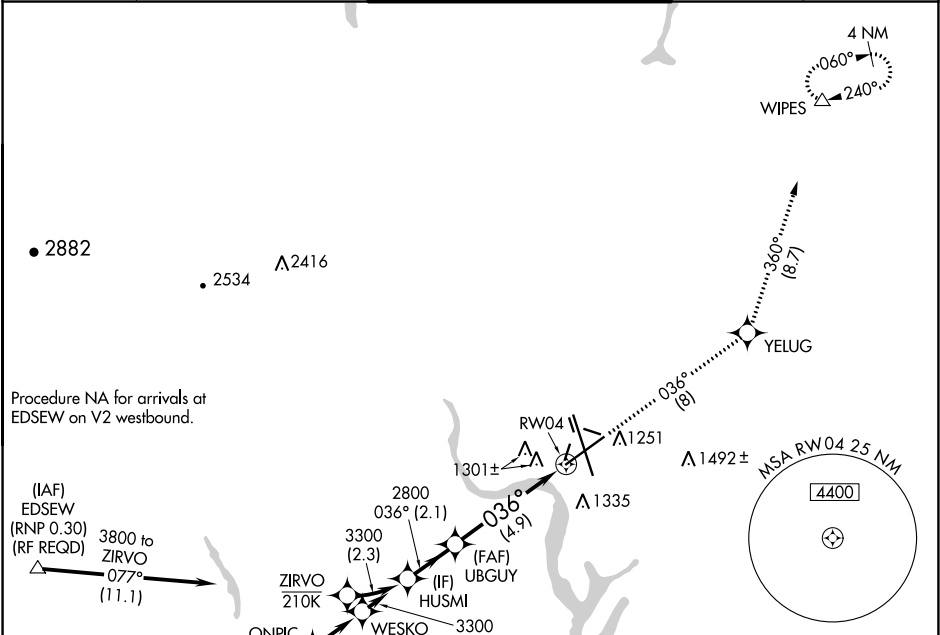
**10000**  
**1189**  
**1189**

**RNAV (RNP) Z RWY 4**  
GRANT COUNTY INTL (MWH)

**V** For uncompensated Baro-VNAV systems, procedure NA below -17°C (2°F) or above 46°C (114°F). GPS required.

MISSED APPROACH: Climb to 4000 on track 036° to YELUG and on track 360° to WIPES and hold.

ATIS <b>119.05</b>	GRANT COUNTY APP CON ★ <b>126.4 379.95</b>	GRANT COUNTY TOWER ★ <b>118.25 (CTAF) 0 257.8 (EAST)</b> <b>128.0 257.8 (WEST)</b>	GND CON <b>121.9</b>	UNICOM <b>122.95</b>
-----------------------	---	--	-------------------------	-------------------------



ELEV 1189

**D**

TDZE 1189

Procedure HUSMI Turn NA

GP 3.00° TCH 50

3300 036° 2800

UBGUY

RW04

2.1 NM 4.9 NM

4000 YELUG tr 036°

tr 360° WIPES

Procedure Turn NA	HUSMI		UBGUY		RW04	
	3300		2800		2800	
GP 3.00° TCH 50		2.1 NM		4.9 NM		
CATEGORY	A	B	C	D		
RNP 0.10 DA	1439-¾ 250 (300-¾)					
RNP 0.30 DA	1498-1 309 (400-1)					
AUTHORIZATION REQUIRED						

4000  
↑  
tr 036°

YELUG  
✦  
tr 360°

WIPES  
△