
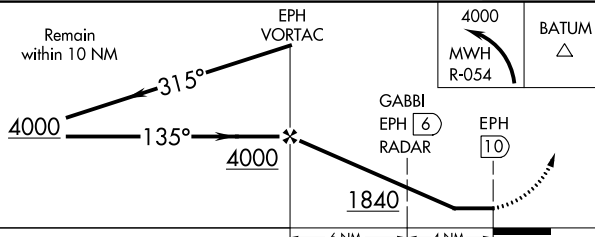
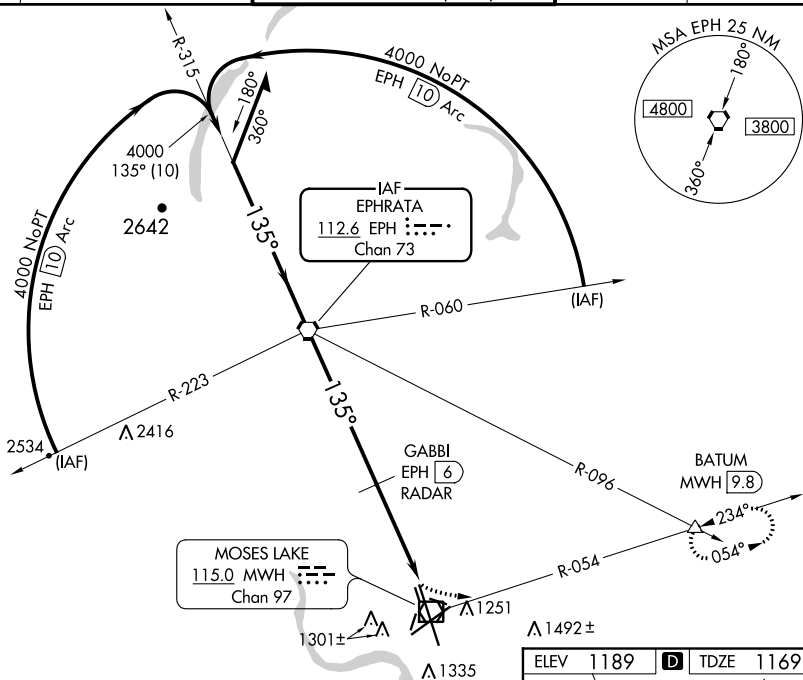


VOR-1 RWY 14L  
GRANT COUNTY INTL (MWH)

|   |   |   |                         |
|---|---|---|-------------------------|
|  |   | MISSED APPROACH: Climbing left turn to 4000 via MWH<br>R-054 to BATUM INT/MWH 9.8 DME and hold. |                         |
| ATIS<br><b>119.05</b>   | GRANT COUNTY APP CON ★<br><b>126.4 379.95</b> | GRANT COUNTY TOWER ★<br><b>118.25 (CTAF) 0 257.8 (EAST)</b><br><b>128.0 257.8 (WEST)</b>        | GND CON<br><b>121.9</b> |
|   |   | UNICOM<br><b>122.95</b>   |                         |



| CATEGORY                    | A      | B           | 6 NM                    |  | 4 NM                     |  |
|-----------------------------|--------|-------------|-------------------------|--|--------------------------|--|
|                             |        |             | C                       |  | D                        |  |
| S-14L                       | 1840-1 | 671 (700-1) | 1840-2<br>671 (700-2)   |  | 1840-2 ¼<br>671 (700-2¼) |  |
| CIRCLING                    | 1840-1 | 651 (700-1) | 1840-2<br>651 (700-2)   |  | 1840-2 ¼<br>651 (700-2¼) |  |
| GABBI DME or RADAR MINIMUMS |        |             |                         |  |                          |  |
| S-14L                       | 1640-1 | 471 (500-1) | 1640-1¼<br>471 (500-1¼) |  | 1640-1½<br>471(500-1½)   |  |
| CIRCLING                    | 1680-1 | 491 (500-1) | 1680-1½<br>491 (500-1½) |  | 1740-2<br>551 (600-2)    |  |

