

VOR/DME MWH
115.0
Chan **97**

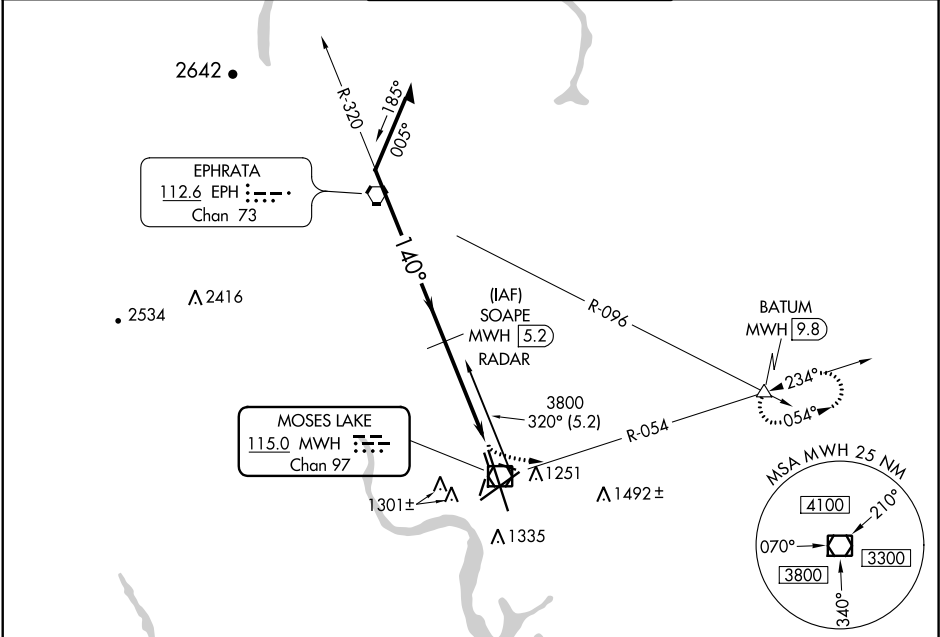
APP CRS
140°

Rwy Idg **13503**
TDZE **1166**
Apt Elev **1185**

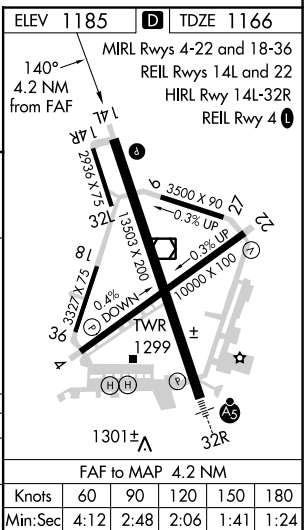
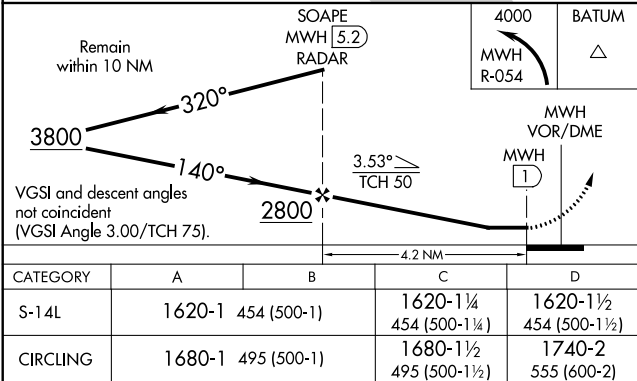
VOR-3 RWY 14L
GRANT COUNTY INTL (MWH)

MISSED APPROACH: Climbing left turn to 4000 via MWH R-054 to BATUM INT/MWH 9.8 DME and hold.

ATIS 119.05	GRANT COUNTY APP CON ★ 126.4 379.95	GRANT COUNTY TOWER ★ 118.25 (CTAF) 0 257.8 (EAST) 128.0 257.8 (WEST)	GND CON 121.9	UNICOM 122.95
-----------------------	---	---	-------------------------	-------------------------



RADAR or DME REQUIRED



NW-1, 31 DEC 2020 to 28 JAN 2021

NW-1, 31 DEC 2020 to 28 JAN 2021