

LOC I-HIO	APP CRS	Rwy Idg	6600
110.7	128°	TDZE	203
		Apt Elev	208

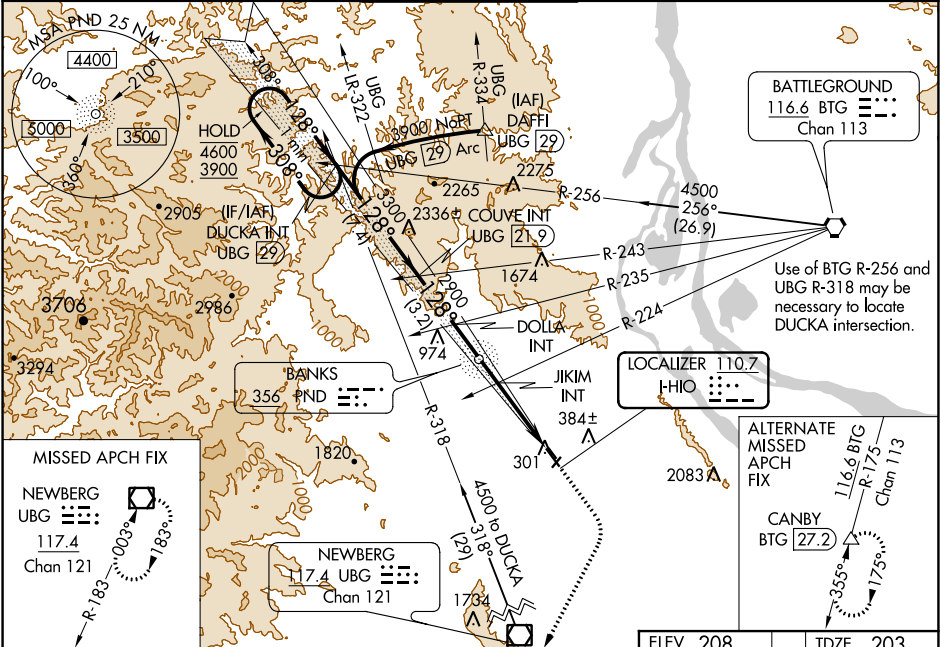
ILS or LOC RWY 13R  
PORTLAND-HILLSBORO (HIO)

**⚠** Circling to Rwy 13L, 31R NA at night. Inop table does not apply to S-LOC Rwy 13R all Cats. For inop ALS, increase JKIM fix minimums Cat C/D visibility to 1 3/8 SM.

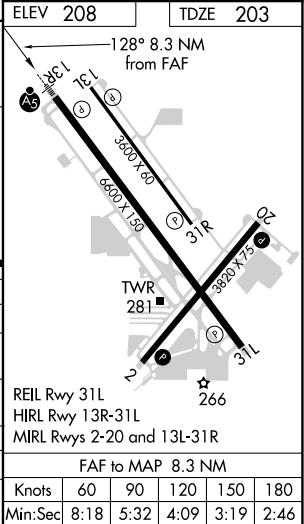
**MALSR**

**MISSED APPROACH:** Climb to 1000 then climbing right turn to 3000 direct UBG VOR/DME and hold. Continue climb-in-hold to 3000.

ATIS <b>127.65</b>	PORTLAND APP CON <b>126.0 269.175</b>	HILLSBORO TOWER ★ <b>119.3 (CTAF) 0 239.3</b>	GND CON <b>121.7</b>	UNICOM <b>122.95</b>
-----------------------	--	--	-------------------------	-------------------------



DUCKA INT UBG 29		COUVE INT UBG 21.9		DOLLA INT		JKIM INT	
One Minute Holding Pattern							
4600 ← 308°		128° →		128°		3300	
3900				2900		*1660	
GS 3.00° TCH 48							
7.4 NM		3.2 NM		3.9 NM		4.4 NM	
CATEGORY	A	B	C	D			
S-ILS 13R	403/24 200 (200-½)						
S-LOC 13R	1660/60 1457 (1500-¼)	1660-1½ 1457 (1500-½)	1660-3 1457 (1500-3)				
CIRCLING	1660-1¼ 1452 (1500-¼)	1660-1½ 1452 (1500-½)	1660-3 1452 (1500-3)				
JKIM FIX MINIMUMS (DUAL VOR RECEIVERS REQUIRED)							
S-LOC 13R	680/24	477 (500-½)	680/50		477 (500-1)		
CIRCLING	680-1 472 (500-1)	720-1 512 (600-1)	720-1½ 512 (600-½)		980-2½ 772 (800-2½)		



NW-1, 31 DEC 2020 to 28 JAN 2021

NW-1, 31 DEC 2020 to 28 JAN 2021