
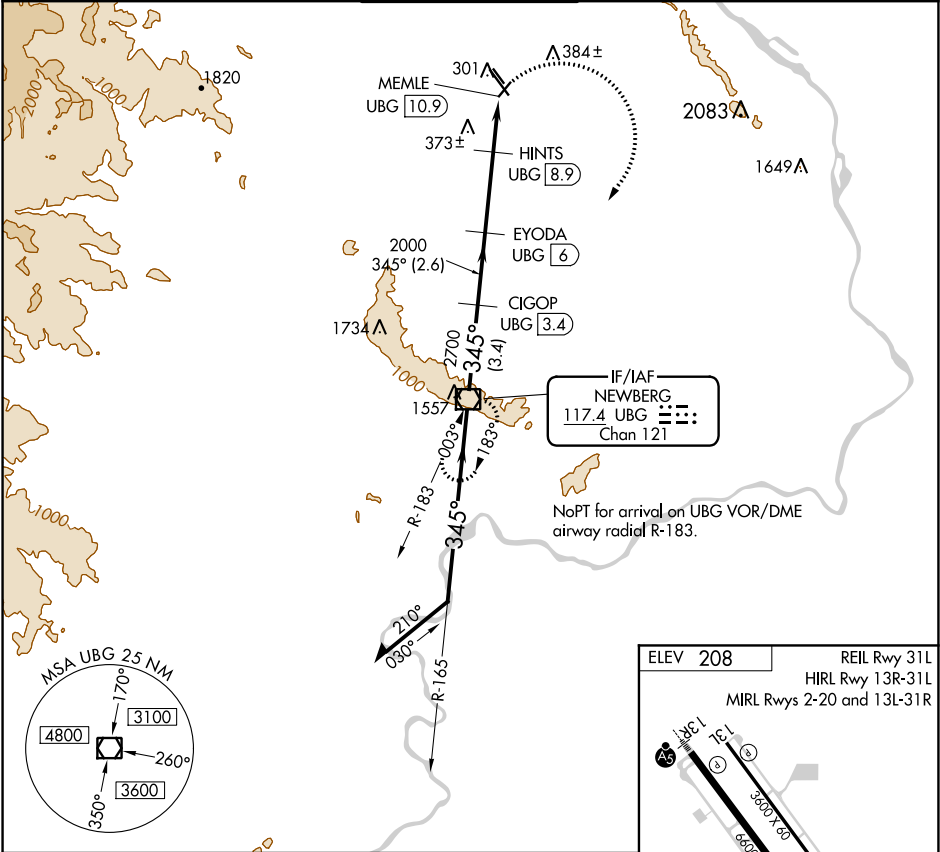


VOR/DME UBG	APP CRS	Rwy Idg	N/A
<b>117.4</b>	<b>345°</b>	TDZE	N/A
Chan <b>121</b>		Apt Elev	<b>208</b>

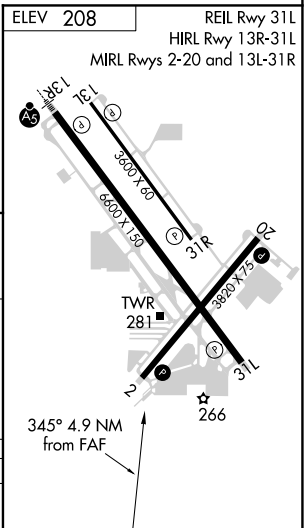
VOR-C  
PORTLAND-HILLSBORO (HIO)

DME required.	MISSED APPROACH: Climbing right turn to 3000 direct UBG VOR/DME and hold. Continue climb-in-hold to 3000.
 Circling to Rwy 13L, 31R NA at night.	

ATIS <b>127.65</b>	PORTLAND APP CON <b>126.0 269.175</b>	HILLSBORO TOWER ★ <b>119.3 (CTAF) 239.3</b>	GND CON <b>121.7</b>	UNICOM <b>122.95</b>
-----------------------	--	--	-------------------------	-------------------------



Remain within 10 NM	UBG VOR/DME	CIGOP UBG 3.4	EYODA UBG 6	HINTS UBG 8.9	MEMLE UBG 10.9	3000 UBG
3100	165°	345°	2700	2700	2000	840
	3.4 NM	2.6 NM	2.9 NM	2 NM		
CATEGORY	A	B	C	D		
CIRCLING	680-1 472 (500-1)	720-1 512 (600-1)	720-1½ 512 (600-1½)	980-2½ 772 (800-2½)		



NW-1, 31 DEC 2020 to 28 JAN 2021

NW-1, 31 DEC 2020 to 28 JAN 2021