

WAAS CH 49232 W02A	APP CRS 017°	Rwy Idg TDZE Apt Elev	6000 444 444
----------------------------------------	------------------------	-----------------------------	-----------------------------------------

RNAV (GPS) RWY 2

BREMERTON NATIONAL (PWT)

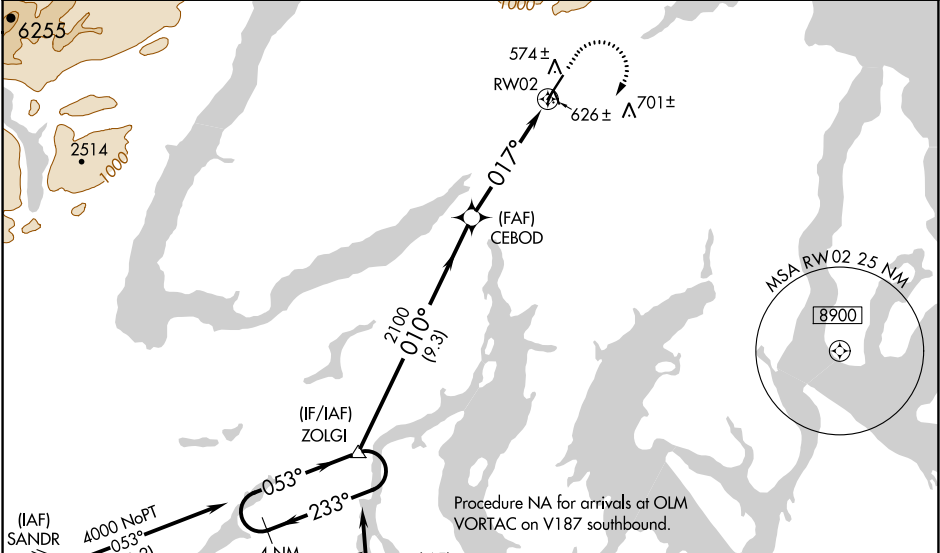
⚠

⚠

Circling NA for Cats C and D west of Rwy 2-20. DME/DME RNP-0.3 NA. VDP and Baro-VNAV NA when using Seattle-Tacoma Intl altimeter setting. When local altimeter setting not received, use Seattle-Tacoma Intl altimeter setting and increase LPV DA to 817 and all visibilities ¼ SM; increase all LNAV/VNAV DA to 958 and all visibilities ¼ SM; increase all MDA 60 feet and LNAV/Circling Cats B, C and D ½ SM. Rwy 2 helicopter visibility reduction below ¾ SM NA.

MISSED APPROACH: Climb to 1200 then climbing right turn to 4000 direct ZOLGI and hold, continue climb-in-hold to 4000.

AWOS-3PT 121.2	SEATTLE APP CON 127.1 254.4 269.125	UNICOM 123.05 (CTAF) 1
--------------------------	-----------------------------------------------	----------------------------------



ELEV 444

TDZE 444

4 NM	VGSI and RNAV glidepath not coincident (VGSI Angle 3.00/TCH 43).	1200	4000	ZOLGI
Holding Pattern		↑	↷	△
4000	←233°→	010°	017°	
GP 3.00°	TCH 56	2100	*2.1 NM to RW02	
		9.3 NM	2.9 NM	2.1 NM
CATEGORY	A	B	C	D
LPV DA	772-1 328 (400-1)			
LNAV/VNAV DA	913-1½ 469 (500-1½)			
LNAV MDA	1160-1 716 (800-1)	1160-2 716 (800-2)		
CIRCLING	1160-1 716 (800-1)	1160-2 716 (800-2)	1240-2½ 796 (800-2½)	

REIL Rwy 2 1

HIRL Rwy 2-20