

WAAS CH <b>61106</b> <b>W20A</b>	APP CRS <b>197°</b>	Rwy Idg 6000 TDZE 442 Apt Elev 444
--	------------------------	---

RNAV (GPS) RWY 20

BREMERTON NATIONAL (PWT')

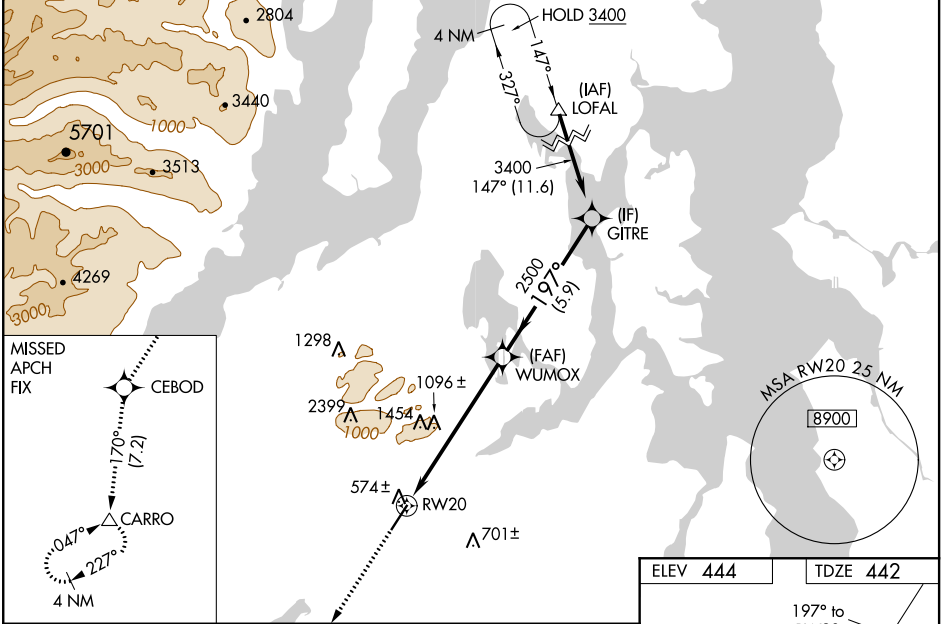
RNP APCH.

⚠ Circling NA for Cats C and D west of Rwy 2-20. For uncompensated Baro-VNAV systems, LNAV/VNAV NA below -15°C or above 54°C. Baro-VNAV and VDP NA when using Seattle-Tacoma Intl altimeter setting. When local altimeter setting not received, use Seattle-Tacoma Intl altimeter setting and increase all DA 45 feet and all MDA 60 feet; increase LNAV Cat A and increase Circling Cats C/D visibility ¼ SM. Inop table does not apply to LNAV/VNAV all Cats.

MALSR

MISSED APPROACH:  
Climb to 4000 direct CEBOD and on track 170° to CARRO and hold, continue climb-in-hold to 4000.

AWOS-3PT <b>121.2</b>	SEATTLE APP CON <b>127.1 254.4 269.125</b>	UNICOM <b>123.05 (CTAF) 0</b>
--------------------------	---	----------------------------------



4000	CEBOD	tr 170°	CARRO		
*LNAV only					
*2.5 NM to RWY 20					
RWY 20					
GP 3.00° TCH 49					
2.5 NM 3.8 NM 5.9 NM					
CATEGORY	A	B	C	D	
LPV DA	642-½ 200 (200-½)				
LNAV/VNAV DA	1396-4 954 (1000-4)				
LNAV MDA	1300-½ 858 (900-½)	1300-¾ 858 (900-¾)	1300-2	858 (900-2)	
CIRCLING	1300-1¼	856 (900-1¼)	1300-2½ 856 (900-2½)	1300-2¾ 856 (900-2¾)	

