

LOC I-TIW 109.1	APP CRS 167°	Rwy Idg TDZE Apt Elev	5002 294 295
---------------------------	------------------------	-----------------------------	---

ILS or LOC RWY 17
TACOMA NARROWS (TIW)

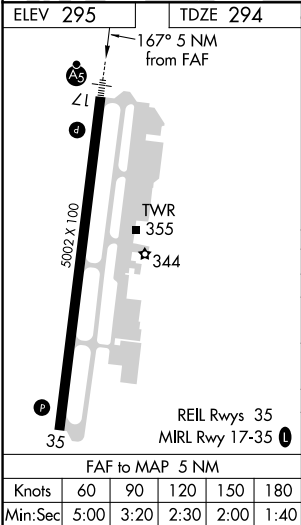
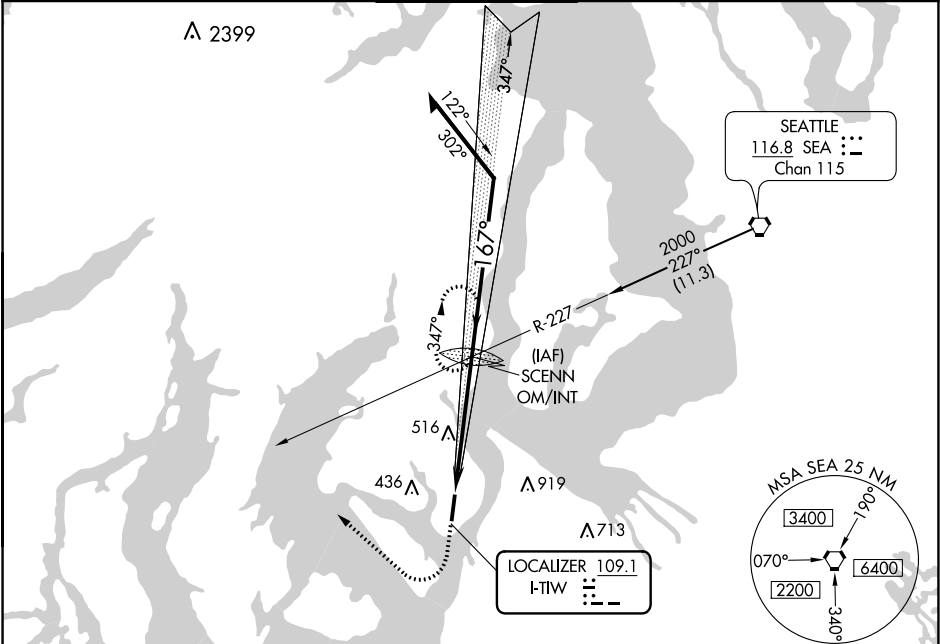
⚠ When control tower closed, obtain local altimeter setting on UNICOM, when not received, use McCord Field altimeter setting minimums.

⚠ Circling not authorized east of Rwy 17-35.

MALSR

MISSED APPROACH: Climb to 1500, then climbing right turn to 2000 via heading 290° and SEA VORTAC R-227 to SCENN INT and hold.

ATIS 124.05	SEATTLE APP CON 120.1 290.9	TACOMA TOWER★ 118.5 (CTAF) 0 253.5	GND CON 121.8	UNICOM 122.95
-----------------------	---------------------------------------	--	-------------------------	-------------------------



1500 ↑	2000 hdg 290°	SEA R-227	SCENN INT	SCENN OM/INT	1964	347°	Remain within 10 NM	2000	GS 3.00° TCH 52
CATEGORY	A		B		C		D		
S-ILS 17	494-½ 200 (200-½)								
S-LOC 17	760-½ 466 (500-½)		760-¾ 466 (500-¾)		760-1 466 (500-1)				
CIRCLING	760-1 465 (500-1)		760-1½ 465 (500-1½)		860-2 565 (600-2)				
McCHORD FIELD ALTIMETER SETTING MINIMUMS									
S-ILS 17	519-½ 225 (300-½)								
S-LOC 17	780- ½ 486 (500-½)		780-¾ 486 (500-¾)		780-1 486 (500-1)				
CIRCLING	780-1 485 (500-1)		780-1½ 485 (500-1½)		860-2 565 (600-2)				