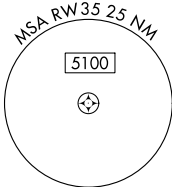
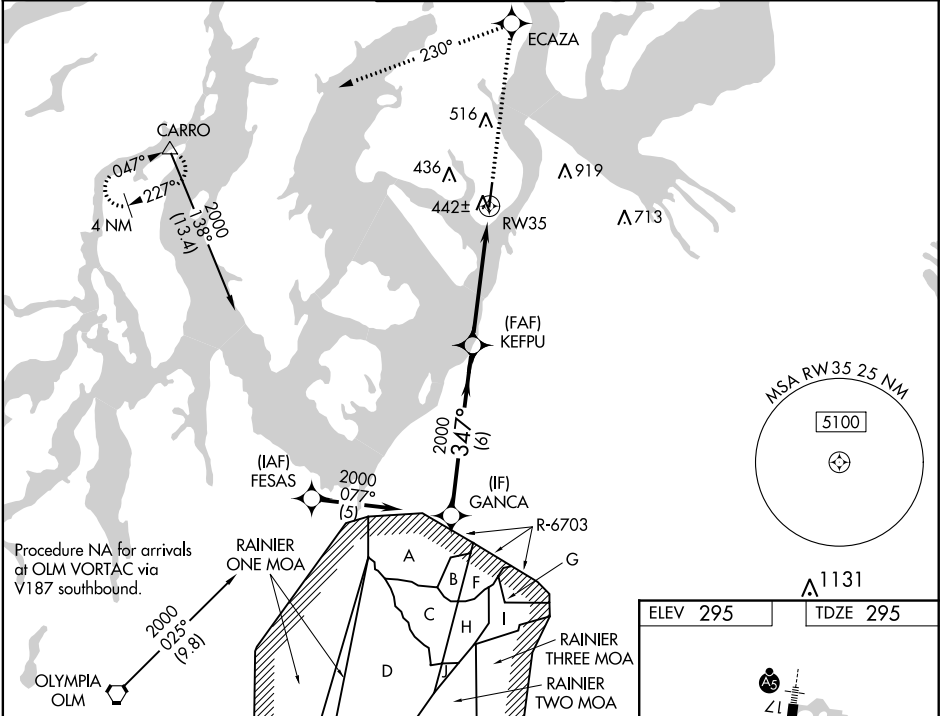


WAAS CH 50312 W35A	APP CRS 347°	Rwy Idg TDZE 295 Apt Elev 295
--	------------------------	---

RNAV (GPS) RWY 35
TACOMA NARROWS (TIW)

RNP APCH	<p>Baro-VNAV NA when using McChord Field altimeter setting. For uncompensated Baro-VNAV systems, LNAV/VNAV NA below -15°C (5°F) or above 48°C (118°F). Circling NA east of Rwy 17-35. When local altimeter setting not received, use McChord Field altimeter setting and increase all DA 25 feet and all MDA 40 feet.</p>	MISSED APPROACH: Climb to 4000 direct ECAZA and left turn via 230° track to CARRO and hold, continue climb-in-hold to 4000.
----------	---	---

ATIS 124.05	SEATTLE APP CON 120.1 290.9	TACOMA TOWER ★ 118.5 (CTAF) 0 253.5	GND CON 121.8	UNICOM 122.95
-----------------------	---------------------------------------	---	-------------------------	-------------------------



ELEV 295	TDZE 295
----------	----------

Procedure Turn NA	VGSI and RNAV glidepath not coincident (VGSI Angle 3.00/TCH 45)	4000	ECAZA	CARRO
GP 3.00° TCH 51	2000	347°	2000	*1.6 NM to RW35 *LNAV only
	6 NM		3.5 NM	1.6 NM
CATEGORY	A	B	C	D
LPV DA	561-7/8	266 (300-7/8)		
LNAV/VNAV DA	769-13/4	474 (500-13/4)		
LNAV MDA	840-1	545 (600-1)	840-1 1/2 545 (600-1 1/2)	840-1 3/4 545 (600-1 3/4)
CIRCLING	980-1	685 (700-1)	980-2 685 (700-2)	980-2 1/4 685 (700-2 1/4)

