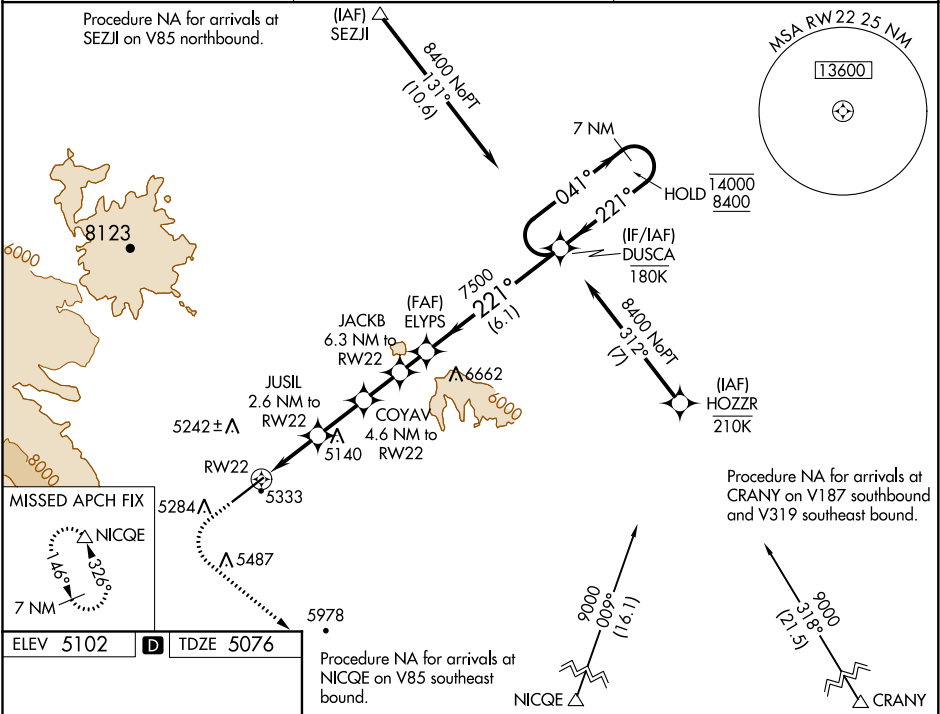


WAAS CH 90543 W22A	APP CRS 221°	Rwy Idg TDZE Apt Elev	7178 5076 5102
--	------------------------	-----------------------------	---

RNAV (GPS) RWY 22
YELLOWSTONE RGNL (COD)

RNP APCH. MISSED APPROACH: (Do not exceed 185K until NICQE) Climb to 5740 then climbing left turn to 9600 direct NICQE and hold, continue climb-in-hold to 9600.

AWOS-3PT 135.075	SALT LAKE CENTER 127.75 351.9	UNICOM 122.8 (CTAF) 0
----------------------------	---	---------------------------------



HIRL Rwy 4-22
REIL Rws 4 and 22

5740	9600	NICQE		
↑	↶	△		
* LNAV only				
JUSIL 2.6 NM to RW22		COYAV 4.6 NM to RW22	JACKB 6.3 NM to RW22	ELYS 7500
* 1.4 NM to RW22		RW22		
5940*		6580*	7120*	7500
DUSCA 7 NM Holding Pattern				
041° → 14000 ← 221° 8400				
GP 3.00° TCH 53				
1.4		1.2	2.1 NM	1.6 NM
1.2		1.2 NM	6.1 NM	
CATEGORY	A		B	C
LPV DA	5399-1		323 (300-1)	
LNAV MDA	5600-1 524 (500-1)		5600-1½ 524 (500-1½)	
CIRCLING	5780-1 678 (700-1)		5900-1 798 (800-1)	
	5940-2½ 838 (900-2½)		7000-3 1898 (1900-3)	

NW-1, 31 DEC 2020 to 28 JAN 2021

NW-1, 31 DEC 2020 to 28 JAN 2021