

CODY, WYOMING

AL-5243 (FAA)

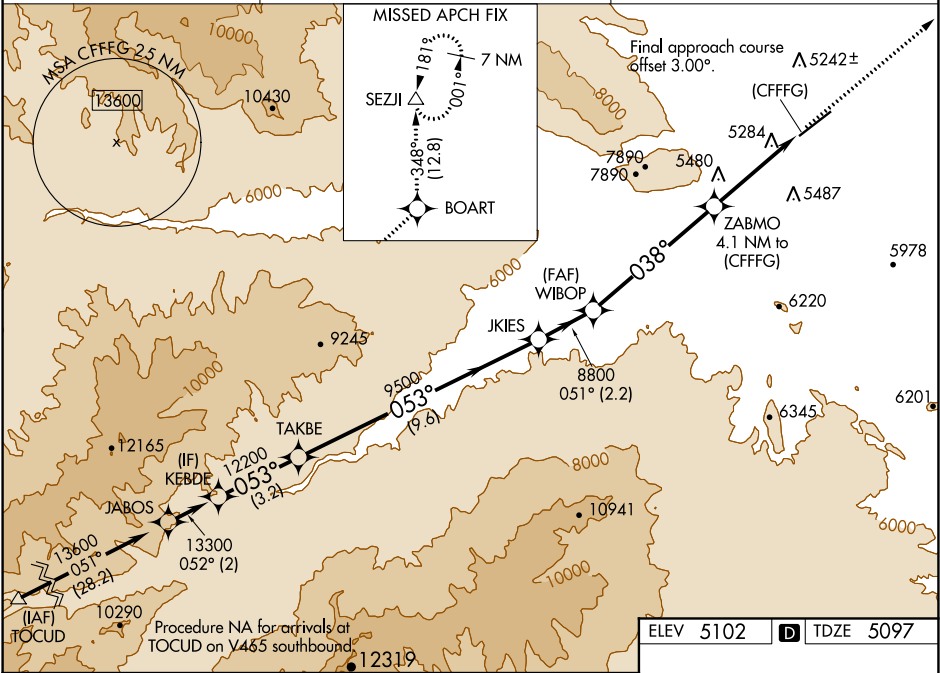
20366

WAAS CH 45943 W04A	APP CRS 038°	Rwy ldg TDZE Apt Elev 7178 5097 5102
----------------------------------------	------------------------	--------------------------------------------------------------------------

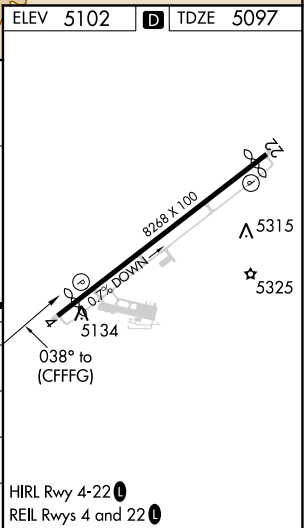
RNAV (GPS) RWY 4
YELLOWSTONE RGNL (COD)

RNP APCH. ▼ ▲ -31°C	Rwy 4 helicopter visibility reduction below ¾ SM NA. Baro-VNAV NA.	MISSED APPROACH: Climb to 8400 direct BOART and on track 348° to SEZJI and hold.
------------------------------	-----------------------------------------------------------------------	-------------------------------------------------------------------------------------

AWOS-3PT 135.075	SALT LAKE CENTER 127.75 351.9	UNICOM 122.8 (CTAF)
----------------------------	-----------------------------------------	-------------------------------



KEBDE	TAKBE	JKIES	WIBOP	ZABMO	SEZJI
13300	12200	9500	8800	8400	8400
GP 3.50°	053°	051°	038°	tr 348°	△
TCH 60	12200	9500	8800	8400	8400
3.2 NM	9.6 NM	2.2 NM	5.7 NM	2.1 NM	2 NM
CATEGORY	A	B	C	D	
LPV DA	5792-2	695 (700-2)			
LNAV/VNAV DA	5891-2½	794 (800-2½)			
LNAV MDA	5920-1 823 (900-1)	5920-1¼ 823 (900-1¼)	5920-2½ 823 (900-2½)		
CIRCLING	5920-1¼ 818 (900-1¼)		5940-2½ 838 (900-2½)	7000-3 1898 (1900-3)	



CODY, WYOMING
Amdt 1 31DEC20

44°31'N-109°01'W

YELLOWSTONE RGNL (COD)
RNAV (GPS) RWY 4

NW-1, 31 DEC 2020 to 28 JAN 2021

NW-1, 31 DEC 2020 to 28 JAN 2021