

CODY, WYOMING

AL-5243 (FAA)

20310

APP CRS	Rwy Idg	N/A
309°	TDZE	N/A
	Apt Elev	5102

RNAV (GPS)-B
YELLOWSTONE RGNL (COD)

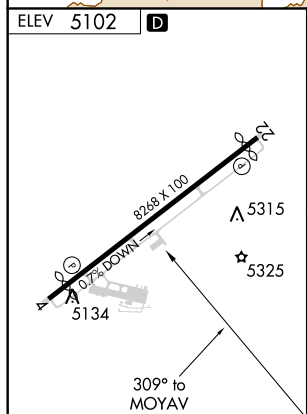
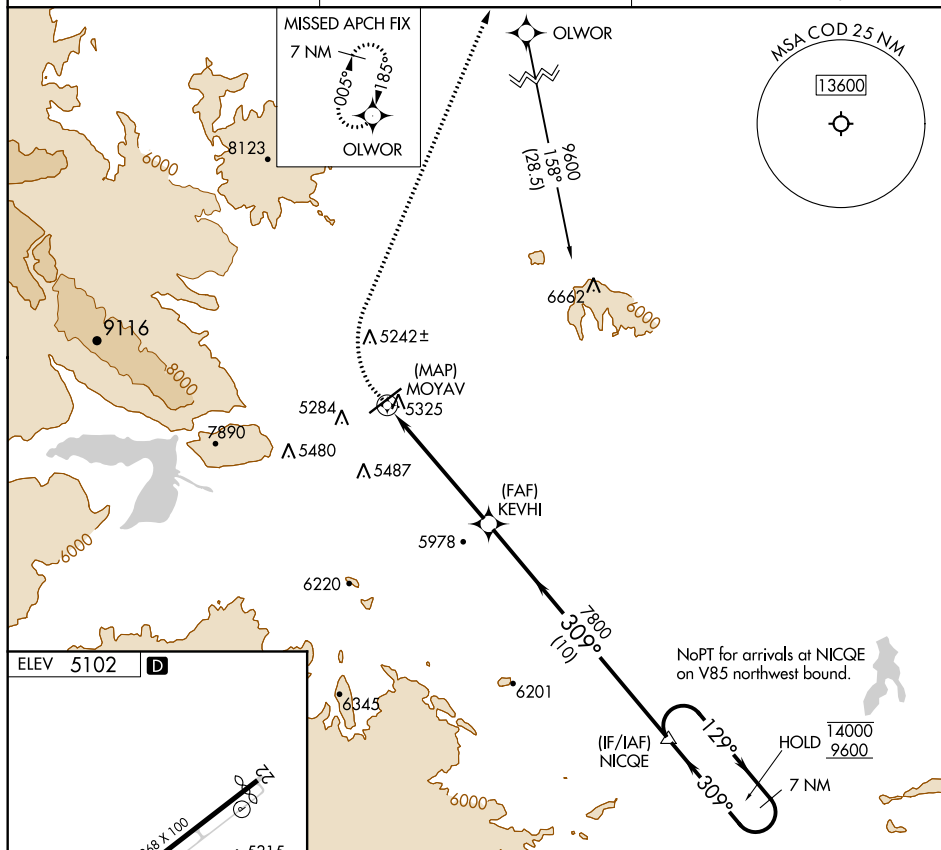
	RNP APCH.
--	-----------




**T
A
-31°C**

MISSED APPROACH: Climb to 6200 then climbing right turn to 8000 direct OLOWR and hold.

AWOS-3PT
135.075

SALT LAKE CENTER
127.75 351.9

UNICOM
122.8 (CTAF) **L**REIL Rwy 4 and 22 **L**HIRL Rwy 4-22 **L**

6200	8000	OLWOR
		

NoPT for arrivals at NICQE
on V85 northwest bound.

IF/IAF/NICQE

129°

HOLD

7 nm

14000
9600

Figure 1: Schematic diagram of the experimental setup. A laser beam (dotted line) is directed at a target (MOYAV) and a detector (KEVHI). The distance between the target and the detector is 5.6 NM. The distance between the detector and the target is 10 NM. The angle between the beam and the detector is 309 degrees. The angle between the beam and the target is 129 degrees. The distance between the target and the detector is 7800 NM.

CATEGORY	A	B	C	D
C CIRCLING	6160-1¼ 1058 (1100-1¼)	6160-1½ 1058 (1100-1½)	6160-3 1058 (1100-3)	6940-3 1838 (1900-3)

CODY, WYOMING
Amdt 1 26MAR20

YELLOWSTONE RGNL (COD)
RNAV (GPS)-B

44°31'N-109°01'W

NW-1, 31 DEC 2020 to 28 JAN 2021

NW-1, 31 DEC 2020 to 28 JAN 2021