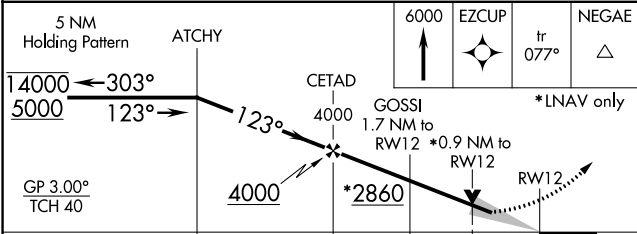
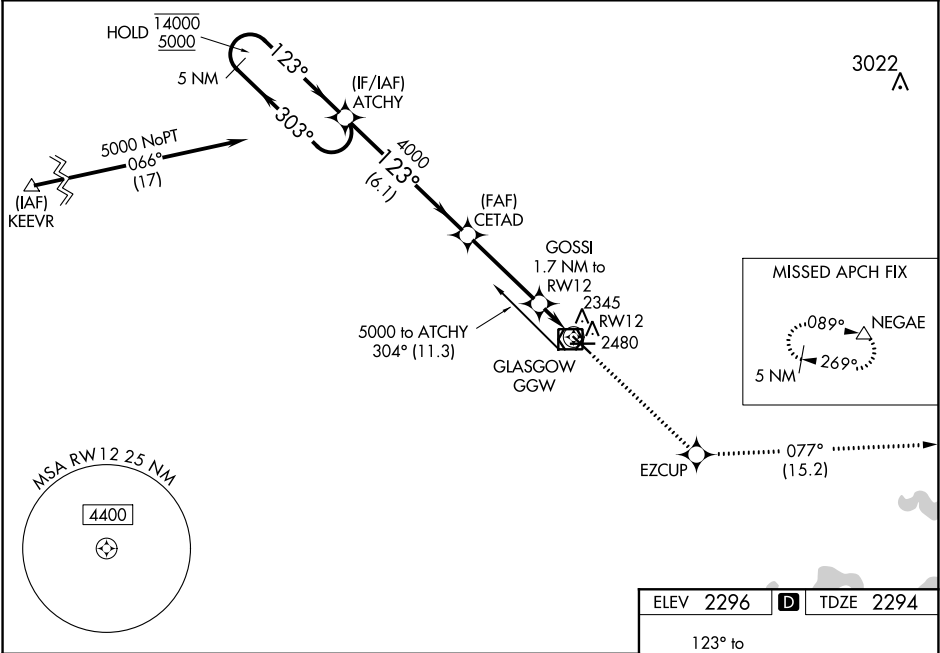


WAAS CH 93620 W12A	APP CRS 123°	Rwy Idg TDZE 5001 2294 Apt Elev 2296
--	------------------------	--

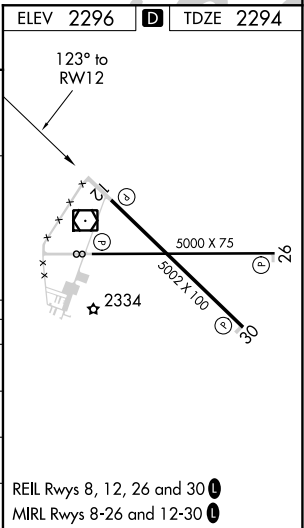
RNAV (GPS) RWY 12
WOKAL FIELD/GLASGOW-VALLEY COUNTY (GGW)

RNP APCH. V A For uncompensated Baro-VNAV systems, LNAV-VNAV NA below -14°C or above 54°C. When local altimeter setting not received, use Wolf Point altimeter setting and increase all DA 141 feet and all MDA 160 feet and increase LPV visibility all Cats ½ SM, LNAV/VNAV visibility all Cats ½ SM, LNAV visibility Cats C and D ½ SM, and Circling visibility Cats C and D ½ SM. Baro-VNAV and VDP NA when using Wolf Point altimeter setting.	MISSED APPROACH: Climb to 6000 direct EZCUP and on track 077° to NEGAE and hold.
--	---

ASOS 135.175	SALT LAKE CENTER 126.85 305.2	UNICOM 122.8 (CTAF) 0
------------------------	---	---------------------------------



CATEGORY	A	B	C	D
LPV DA	2544-7/8	250 (300-7/8)		
LNAV/VNAV DA	2587-1	293 (300-1)		
LNAV MDA	2600-1	306 (400-1)	2600-7/8	306 (400-7/8)
CIRCLING	2780-1	484 (500-1)	2780-1½ 484 (500-1½)	2860-2 564 (600-2)



NW-1, 31 DEC 2020 to 28 JAN 2021

NW-1, 31 DEC 2020 to 28 JAN 2021