

VOR/DME HVR	APP CRS	Rwy Idg	5205
111.8	244°	TDZE	2586
Chan 55		Apt Elev	2591

VOR RWY 26
HAVRE CITY-COUNTY (HVR)

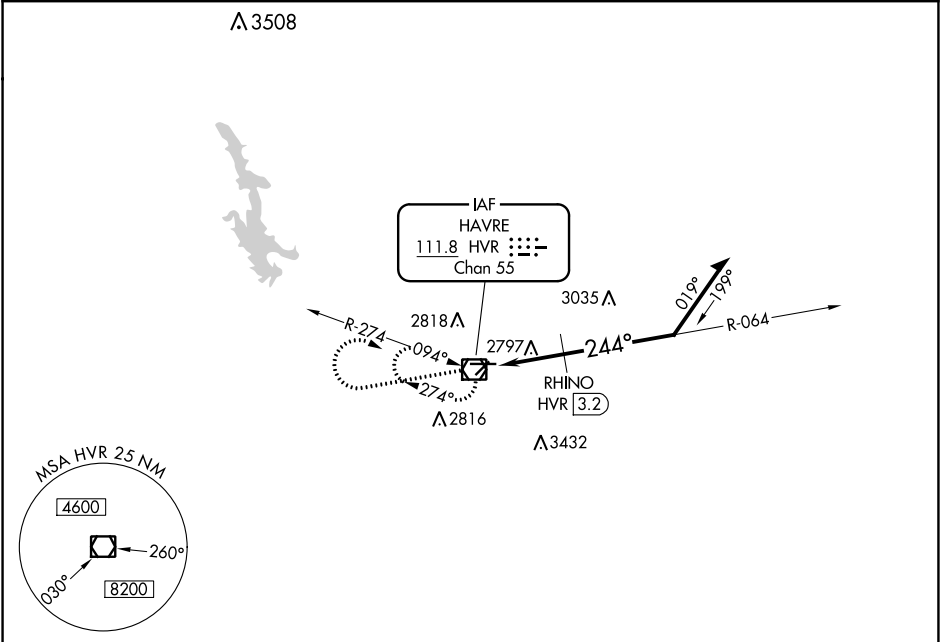
M

A

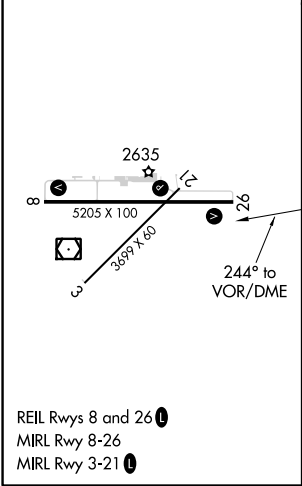
S -30°C

MISSED APPROACH: Climb to 4500 then climbing right turn to 8000 direct HVR VOR/DME and hold, continue climb-in-hold to 8000.

ASOS 135.225	SALT LAKE CENTER 133.4 285.4	UNICOM 122.8 (CTAF) 0
-----------------	---------------------------------	---------------------------------



ELEV 2591	D	TDZE 2586
-----------	----------	-----------



4500 8000 HVR

VGSI and descent angles not coincident (VGSI Angle 3.00/TCH 37).

HVR VOR/DME 10000

064° 4500

244° 3480

3.34° TCH 38

3.2 NM

Remain within 10 NM

CATEGORY	A	B	C	D
S-26	3480-1¼ 894 (900-1¼)		3480-2¾ 894 (900-2¾)	3480-3 894 (900-3)
CIRCLING	3480-1¼ 889 (900-1¼)		3480-2¾ 889 (900-2¾)	3480-3 889 (900-3)
RHINO FIX MINIMUMS				
S-26	3060-1 474 (500-1)		3060-1¼ 474 (500-1¼)	3060-1½ 474 (500-1½)
CIRCLING	3080-1 489 (500-1)	3120-1 529 (600-1)	3120-1½ 529 (600-1½)	3180-2 589 (600-2)

NW-1, 31 DEC 2020 to 28 JAN 2021

NW-1, 31 DEC 2020 to 28 JAN 2021