

| | | | |
|------------|---------|----------|------|
| VORTAC DSD | APP CRS | Rwy Idg | 5201 |
| 117.6 | 136° | TDZE | 3432 |
| Chan 123 | | Apt Elev | 3460 |

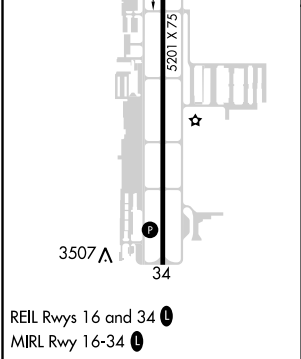
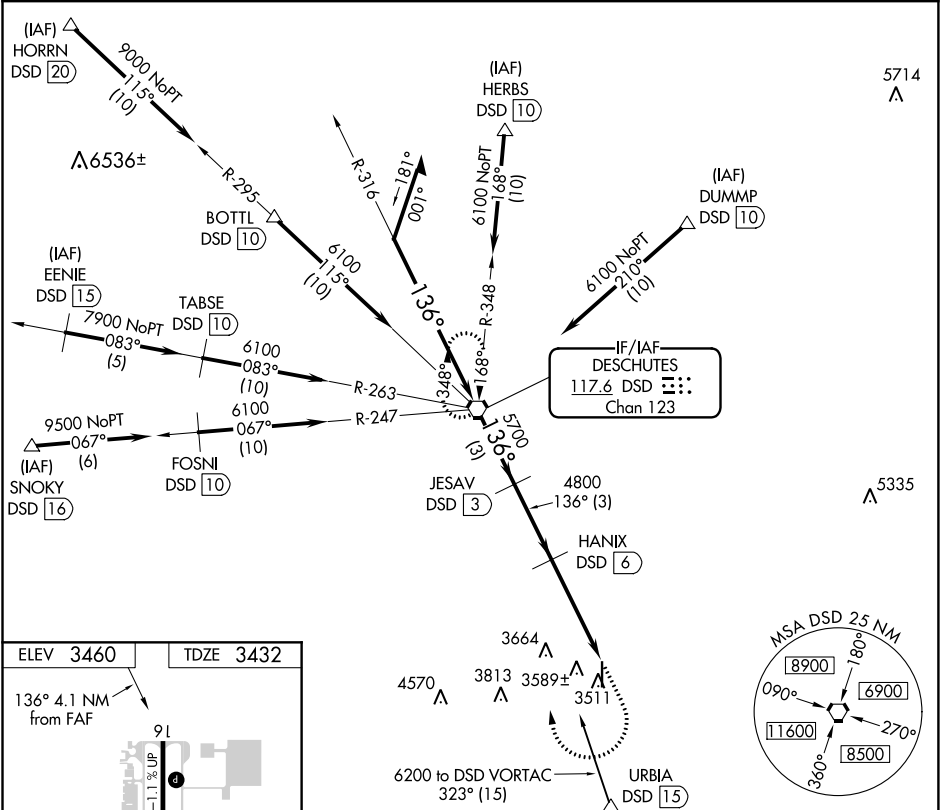
VOR/DME RWY 16

BEND MUNI (BDN)

⚠ When local altimeter setting not received, use Redmond alimeter setting and increase all MDAs 80 feet, increase S-16 Cat C/D visibility 1/8 mile, and Circling Cat C visibility 1/4 mile. Helicopter visibility reduction below 1 SM NA. Night landing: Rwy 16 NA.

MISSED APPROACH: Climb to 4700 then climbing right turn to 7000 direct DSD VORTAC and hold.

| | | |
|-------------------|----------------------------------|---------------------------------|
| AWOS-3 134.425 | SEATTLE CENTER 126.15 269.475 | UNICOM 123.0 (CTAF) 0 |
|-------------------|----------------------------------|---------------------------------|



| | | | | | |
|-------------------------------------------------------------------|-----------------------|-----------------------|-------------------------------|-------------------------|--|
| Remain within 10 NM | | DSD VORTAC | | 4700 7000 DSD | |
| 6100 316° | | JESAV DSD 3 | | HANIX DSD 6 | |
| 6100 136° | | 5700 136° | | DSD 10.1 | |
| VGSi and descent angles not coincident (VGSi Angle 3.00°/TCH 38). | | 4800 3.09° TCH 50 | | | |
| | | 3 NM 3 NM 4.1 NM | | | |
| CATEGORY | A | B | C | D | |
| S-16 | 3840-1 | 408 (400-1) | 3840-1 1/4 | 408 (400-1 1/4) | |
| C CIRCLING | 3940-1 480 (500-1) | 4000-1 540 (600-1) | 4120-1 3/4 660 (700-1 3/4) | 4640-3 1180 (1200-3) | |

NW-1, 31 DEC 2020 to 28 JAN 2021

NW-1, 31 DEC 2020 to 28 JAN 2021