

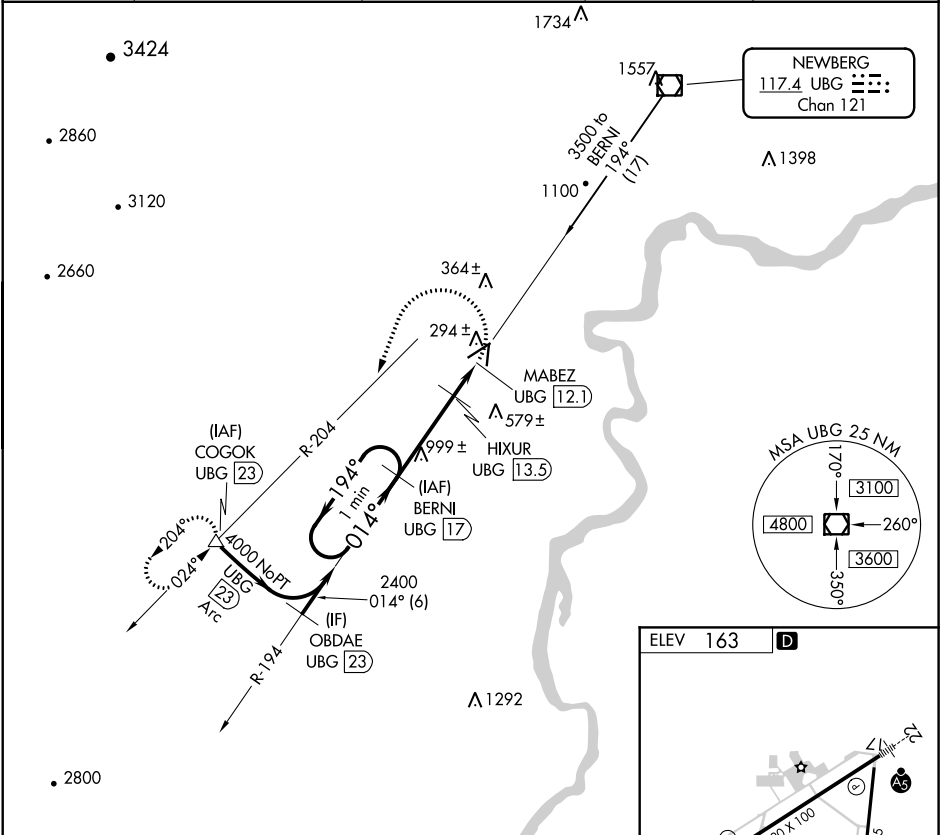
VOR/DME UBG 117.4 Chan 121	APP CRS 014°	Rwy Idg TDZE Apt Elev N/A N/A 163
--	------------------------	---

VOR/DME-B
MC MINNVILLE MUNI (MMV)

⚠ When local altimeter setting not received use Aurora State altimeter setting and increase all MDA 60 feet and all visibility ¼ mile.

MISSED APPROACH: Climbing left turn to 4800 via heading 180° and UBG VOR/DME R-204 to COGOK/UBG 23 DME and hold, continue climb-in-hold to 4800. When authorized by ATC, climb-in-hold to 6000.

ASOS 135.675	PORTLAND APP CON 126.0 284.6 (NORTH)	SEATTLE CENTER 125.8 291.7 (SOUTH)	CLNC DEL 118.35	UNICOM 123.0 (CTAF) 1
------------------------	--	--	---------------------------	--



One Minute Holding Pattern

BERNI UBG (17)

4800	UBG	COGOK
hdg 180°	R-204	△

HIXUR UBG (13.5) MABEZ UBG (12.1)

CATEGORY	A	B	C	D
CIRCLING	840-1	677 (700-1)	840-2 677 (700-2)	880-2¼ 717 (800-2¼)

ELEV 163 **D**

014° 4.9 NM from FAF

REIL Rwy 4 **1**
HIRL Rwy 4-22 **1**

NW-1, 31 DEC 2020 to 28 JAN 2021

NW-1, 31 DEC 2020 to 28 JAN 2021