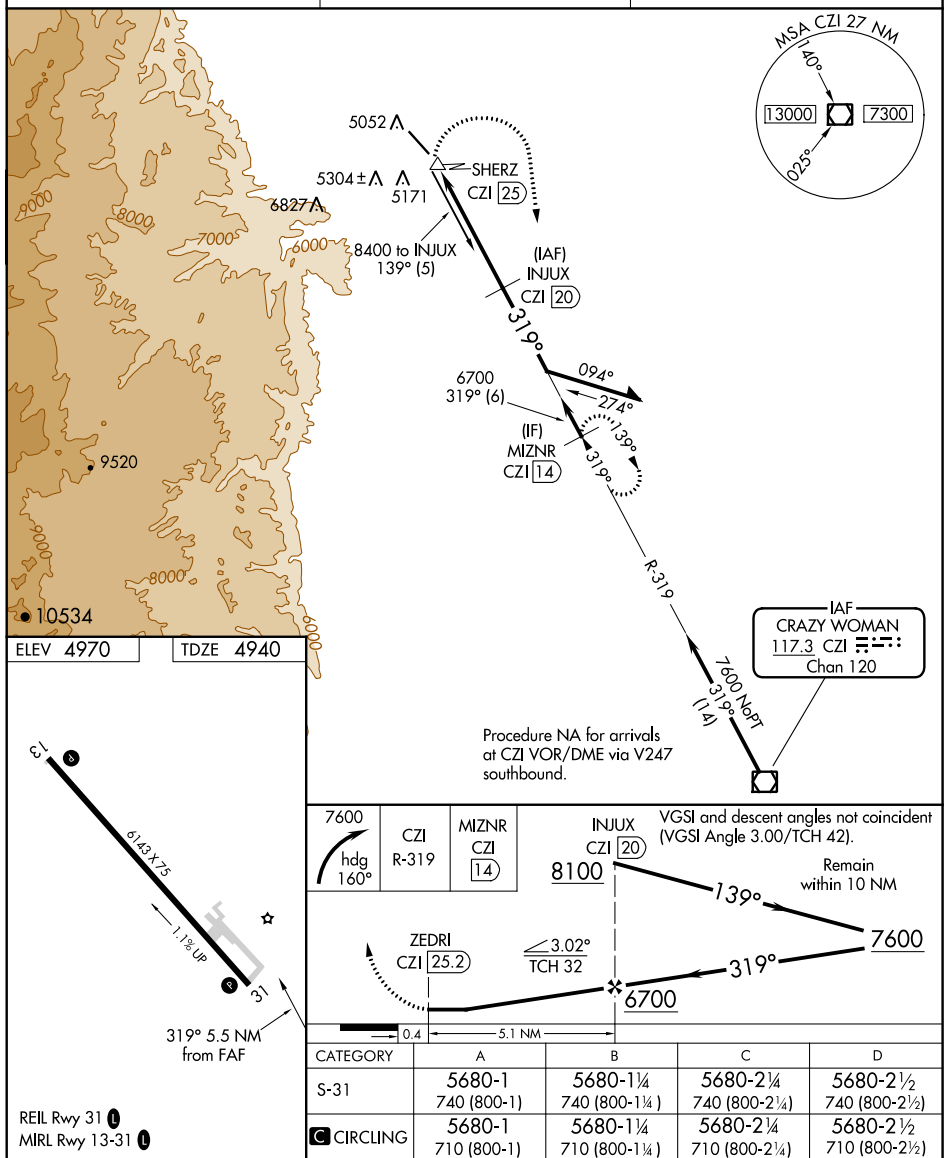


VOR/DME RWY 31  
JOHNSON COUNTY (BYG)

**MISSED APPROACH:** Climbing right turn to 7600 via heading 160° and CZI VOR/DME R-319 to MIZNR/14 DME and hold.

UNICOM  
122.8 (CTAF) **L**



NW-1, 31 DEC 2020 to 28 JAN 2021