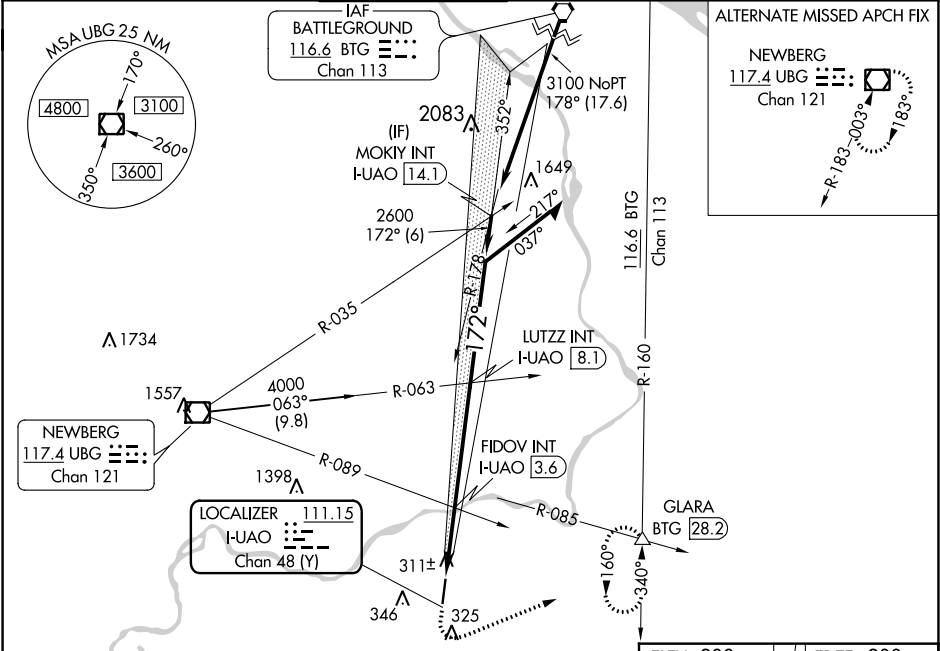


LOC/DME I-UAO	APP CRS	Rwy Idg
<b>111.15</b>	<b>172°</b>	<b>5003</b>
Chan <b>48</b> (Y)		TDZE <b>200</b>
		Apt Elev <b>200</b>

LOC RWY 17  
AURORA STATE (UAO)

▼ Rwy 17 helicopter visibility reduction below ¾ SM NA. ▲ FIDOV fix minimums: Inop table does not apply to Cats C/D. For inop ALS, increase S-17 Cats C/D visibility to 2½ SM.	ODALS	MISSED APPROACH: Climb to 900 then climbing left turn to 4000 on heading 050° and BTG R-160 to GLARA INT/ BTG 28.2 DME and hold, continue climb-in-hold to 4000.
--	-------	--

ATIS ★ <b>118.525</b>	PORTLAND APP CON <b>126.0 269.175</b>	AURORA TOWER ★ <b>120.35</b> (CTAF) <b>0</b>	GND CON <b>119.15</b>	CLNC DEL <b>119.15</b>	PORTLAND CLNC DEL <b>119.95</b> (When tower closed)
--------------------------	--	---	--------------------------	---------------------------	---



ALTERNATE MISSED APCH FIX

NEWBERG  
117.4 UBG Chan 121

900	4000	BTG	GLARA	LUTZ INT I-UAO [8.1]	ELEV 200	TDZE 200
hdg 050°		R-160	△	Remain within 10 NM	172° 7.1 NM from FAF	
FIDOV INT I-UAO [3.6]						
I-UAO [1.9]						
I-UAO [1]						
1000	2600					
0.9	1.7	4.5 NM				
CATEGORY	A	B	C	D		
S-17	1000-¾ 800 (800-¾)	1000-1 800 (800-1)	1000-2 800 (800-2)			
CIRCLING	1000-1 800 (800-1)	1000-1½ 800 (800-1½)	1000-2½ 800 (800-2½)			
FIDOV FIX MINIMUMS						
S-17	580-¾ 380 (400-¾)		580-1 380 (400-1)			
CIRCLING	700-1 500 (500-1)		700-1½ 500 (500-1½)	940-2½ 740 (800-2½)		
MIRL Rwy 17-35						
FAF to MAP 7.1 NM						
Knots	60	90	120	150	180	
Min:Sec	7:06	4:44	3:33	2:50	2:22	