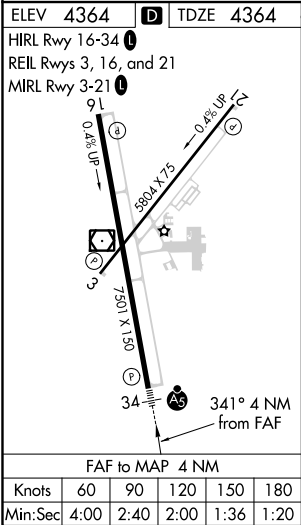
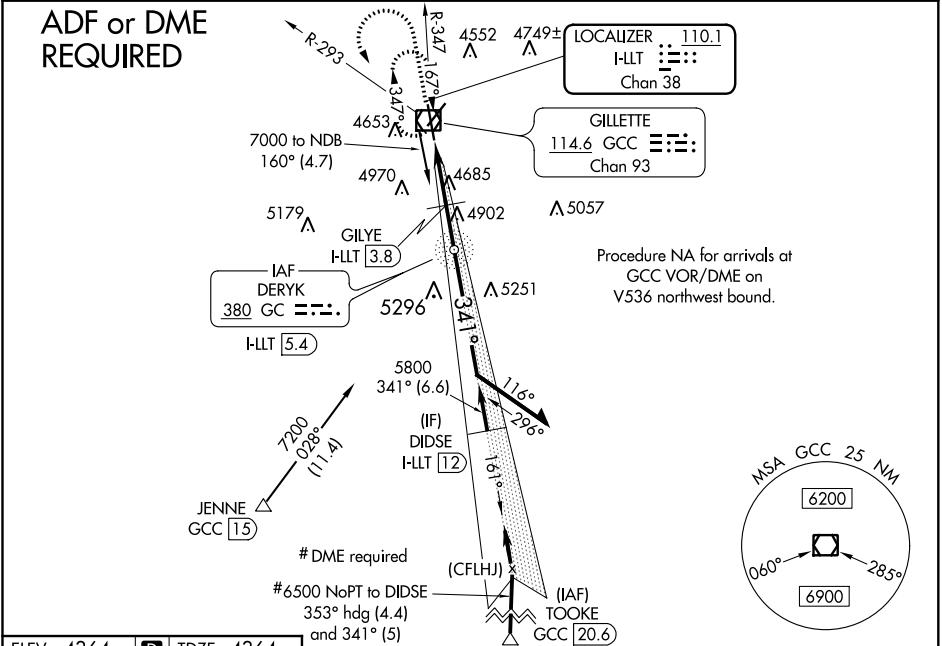


LOC/DME I-LLT 110.1 Chan 38	APP CRS 341°	Rwy Idg TDZE 4364 Apt Elev 4364
---	------------------------	---

ILS or LOC RWY 34
NORTHEAST WYOMING RGNL (GCC)

A Circling to Rwy 3 NA at night. ADF or DME required. For inop ALS, increase S-LOC Cat A visibility to 1 SM.	MALSR	MISSED APPROACH: Climb to 5700 then climbing left turn to 7000 on heading 150° and on GCC VOR/DME R-293 to GCC VOR/DME and hold, continue climb-in-hold to 7000.
---	-------	--

ASOS 124.175	DENVER CENTER 135.6 363.025	UNICOM 122.95	CTAF 118.5
------------------------	---------------------------------------	-------------------------	----------------------



5700	7000	GCC R-293	GCC	DERYK NDB I-LLT 5.4	VGSI and ILS glidepath not coincident. (VGSI Angle 3.20/TCH 56)
↑	hdg 150°				Remain within 10 NM
Use I-LLT DME when on the LOC course.					
*LOC only	I-LLT 1.4	*HLLT 3	GILYE HLLT 3.8	5710	161°
				5240*	341°
				5800	6600
	1.6 NM	0.8	1.6 NM		GS 3.00° TCH 52
CATEGORY	A	B	C	D	
S-ILS 34	4564-1/2 200 (200-1/2)				
S-LOC 34	5240-1/2 876 (900-1/2)	5240-3/4 876 (900-3/4)	5240-2 876 (900-2)		
CIRCLING	5240-1 1/4 876 (900-1 1/4)		5400-3 1036 (1100-3)		
GILYE FIX MINIMUMS					
S-LOC 34	4940-1/2 576 (600-1/2)		4940-1 1/4 576 (600-1 1/4)		
CIRCLING	5040-1 676 (700-1)	5240-1 1/4 876 (900-1 1/4)	5400-3 1036 (1100-3)		