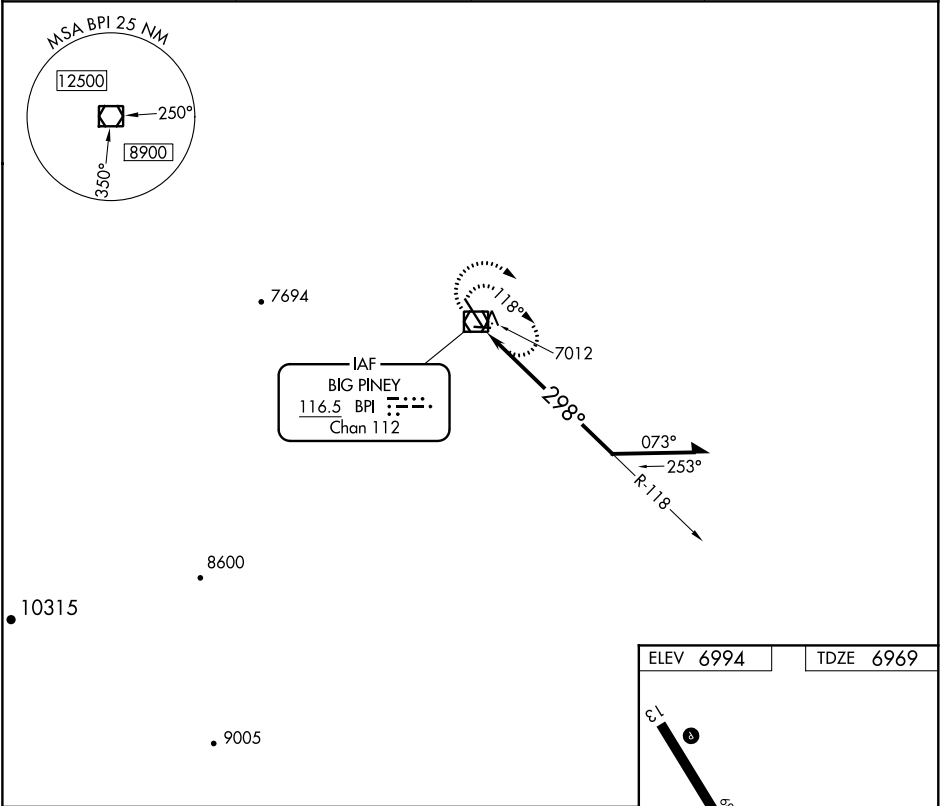



VOR/DME BPI 116.5 Chan 112	APP CRS 298°	Rwy Idg TDZE Apt Elev 6803 6969 6994
--	------------------------	--

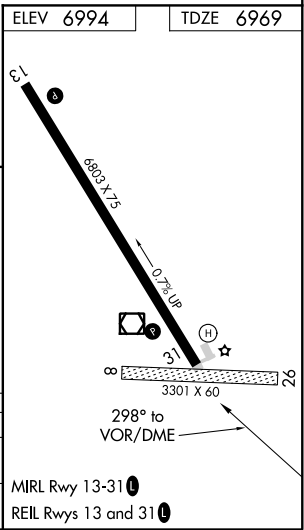
VOR RWY 31
MILEY MEMORIAL FIELD (BPI)

 Circling NA to Rwy 8 and 26.	MISSED APPROACH: Climbing right turn to 10000 on BPI R-118, then return to BPI VOR/DME and hold.
--	--

ASOS 135.225	SALT LAKE CENTER 128.35 239.25	UNICOM 122.8 (CTAF)	122.70
------------------------	--	-------------------------------	---------------



10000 BPI R-118	BPI 	BPI VOR/DME	118°	298°	8500	Remain within 10 NM
CATEGORY	A	B	C	D		
S-31	7680-1	711 (700-1)	7680-2 711 (700-2)	7680-2¼ 711 (700-2¼)		
CIRCLING	7680-1	686 (700-1)	7680-2 686 (700-2)	7680-2¼ 686 (700-2¼)		



NW-1, 31 DEC 2020 to 28 JAN 2021

NW-1, 31 DEC 2020 to 28 JAN 2021