

APP CRS
351°

Rwy Idg
TDZE
Apt Elev

3900
4862
4862

RNAV (GPS) RWY 35
REXBURG-MADISON COUNTY (R.XE)

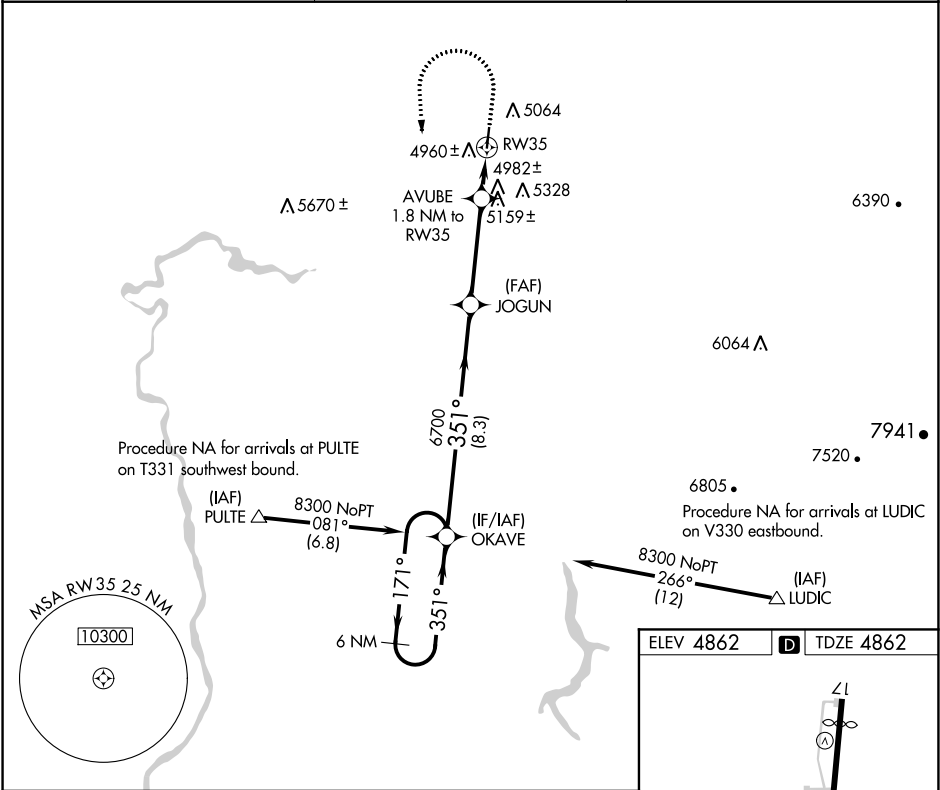
▼

⚠

Rwy 35 helicopter visibility reduction below ¾ SM NA. DME/DME RNP-0.3 NA.
When local altimeter setting not received, use Idaho Falls altimeter setting and increase all MDA 80 feet and increase LNAV Cat C/D visibility ½ SM and Circling Cat C/D visibility ¼ SM. Circling Rwy 35 NA at night.

MISSED APPROACH: Climb to 5600 then climbing left turn to 8300 direct OKAVE and hold.

ASOS 135.075	SALT LAKE CENTER 128.35 239.25	UNICOM 122.8 (CTAF) 0
-----------------	-----------------------------------	--------------------------



6 NM Holding Pattern

OKAVE

8300

171°

351°

351°

6700

JOGUN

5600

8300

OKAVE

AVUBE 1.8 NM to RW35

3.00° TCH 40

5480

6 NM

8.3 NM

3.8 NM

1.8 NM

CATEGORY	A	B	C	D
LNAV MDA	5260-1	398 (400-1)	5260-1½	398 (400-1½)
CIRCLING	5380-1 518 (600-1)	5580-1 718 (800-1)	5680-2½ 818 (900-2½)	5760-3 898 (900-3)

ELEV 4862

TDZE 4862

REIL Rwy 35

MIRL Rwy 17-35

4204 X 75

4890 Δ

4890 Δ

4890 Δ

4890 Δ

35

351° to RW35