

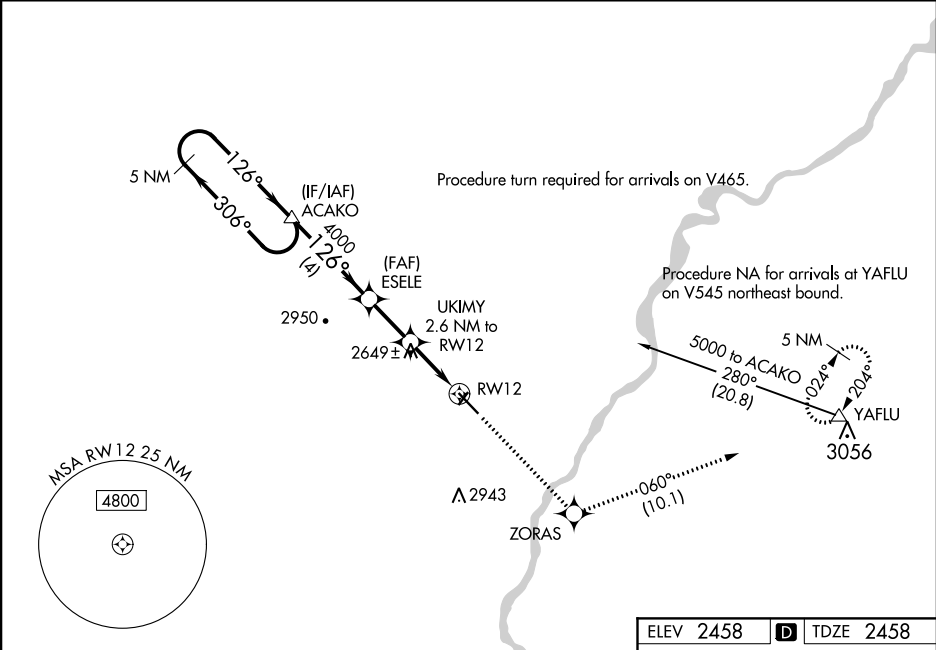
WAAS CH 40423 W12A	APP CRS 126°	Rwy Idg TDZE Apt Elev	5704 2458 2458
--	------------------------	-----------------------------	---

RNAV (GPS) RWY 12

DAWSON COMMUNITY (GDV)

RNP APCH. ▼ For uncompensated Baro-VNAV systems, LNAV/VNAV NA below -19°C or above 28°C. When local altimeter setting not received, procedure NA. Rwy 12 helicopter visibility reduction below ¾ SM NA.	MISSED APPROACH: Climb to 6000 direct ZORAS and on track 060° to YAFLU and hold, continue climb-in-hold to 6000.
--	--

AWOS-3PT 135.075	SALT LAKE CENTER 126.85 305.2	UNICOM 122.8 (CTAF) 1
----------------------------	---	---------------------------------



VGSI and RNAV glidepath not coincident (VGSI Angle 3.00/TCH 37).		6000	ZORAS	YAFLU
5 NM Holding Pattern		↑	✧	△
ACAKO			tr 060°	
5000 ← 306° 126° →		ESELE		*LNAV only
GP 3.00° TCH 52		4000	UKIMY 2.6 NM to RW12	
		4000	*3320	
		4 NM	2.1 NM	2.6 NM
CATEGORY	A	B	C	D
LPV DA	2708-1 250 (300-1)			
LNAV/VNAV DA	2708-1 250 (300-1)			
LNAV MDA	2900-1	442 (500-1)	2900-1 3/8	442 (500-1 3/8)
CIRCLING	2900-1 442 (500-1)	2920-1 462 (500-1)	2920-1 1/2 462 (500-1 1/2)	3020-2 562 (600-2)

