

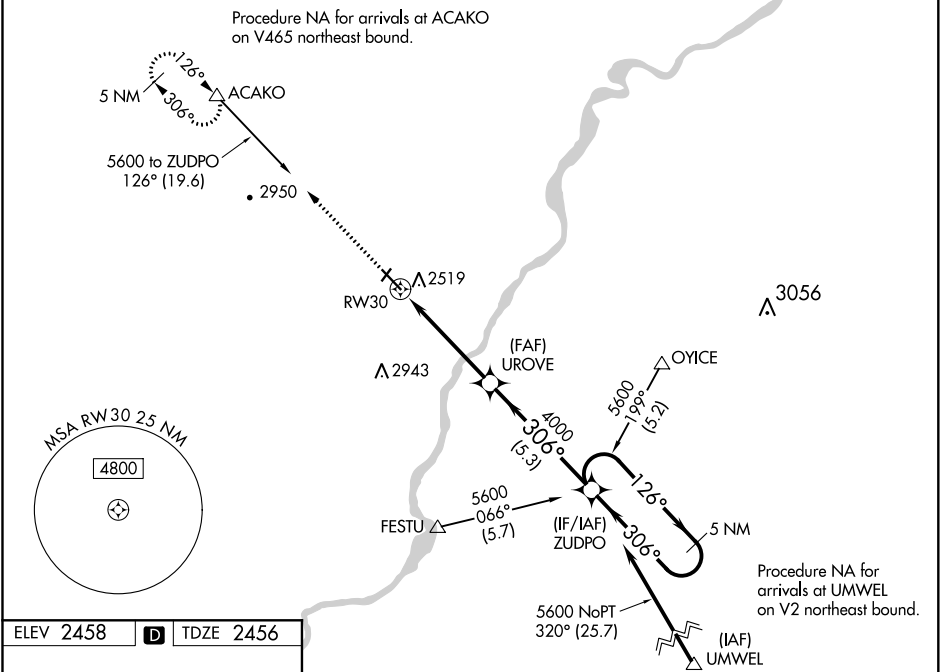
WAAS CH <b>86623</b> <b>W30A</b>	APP CRS <b>306°</b>	Rwy Idg TDZE <b>2456</b> Apt Elev <b>2458</b>
--	------------------------	---

RNAV (GPS) RWY 30

DAWSON COMMUNITY (GDV)

RNP APCH. For uncompensated Baro-VNAV systems, LNAV/VNAV NA below -19°C or above 28°C. When local altimeter setting not received, procedure NA. Rwy 30 helicopter visibility reduction below ¾ SM NA.	MISSED APPROACH: Climb to 6000 direct ACAKO and hold, continue climb-in-hold to 6000.
--	---

AWOS-3PT <b>135.075</b>	SALT LAKE CENTER <b>126.85 305.2</b>	UNICOM <b>122.8 (CTAF) 0</b>
----------------------------	---	---------------------------------



REIL Rwys 12 and 30  
MRL Rwys 2-20 and 12-30

<div>6000 ↑</div>		<div>ACAKO △</div>		VGSI and RNAV glidepath not coincident (VGSI Angle 3.00/TCH 37).						
<div>RW30 4000</div>		<div>UROVE 4000</div>		<div>ZUDPO 5 NM Holding Pattern 126° → 5600 ← 306° GP 3.00° TCH 52</div>						
<div>4.7 NM</div>		<div>5.3 NM</div>								
CATEGORY		A	B	C	D					
LPV DA	2706-1 250 (300-1)									
LNAV/VNAV DA	2706-1 250 (300-1)									
LNAV MDA	2780-1 324 (400-1)									
CIRCLING	2840-1 382 (400-1)	2920-1 462 (500-1)	2920-1½ 462 (500-1½)	3020-2 562 (600-2)						