




HAILEY, IDAHO

AL-6239 (FAA)

20254

NDB/DME HLE <u>220</u> Chan 25 (108.8)	APP CRS 335°	Rwy Idg TDZE Apt Elev 5320	N/A N/A
--	------------------------	---	--------------------------

NDB/DME-A
FRIEDMAN MEMORIAL (SUN)

 Circling NA NE of Rwy 13-31. Visibility reduction by helicopters NA. When control tower closed, procedure not authorized. Occasional ADF needle swings away from the final approach course are to be expected north of missed approach point. Procedure NA at night.
 NA
 -14°C

MISSED APPROACH: Climbing left turn to 8800 direct HLE NDB and hold.

ATIS 128.225	SALT LAKE CENTER 118.05 353.0	HAILEY TOWER ★ 125.6 (CTAF) 0	GND CON 121.7	UNICOM 122.95
-----------------	----------------------------------	----------------------------------	------------------	------------------

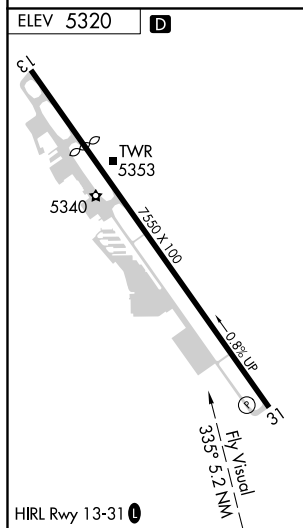
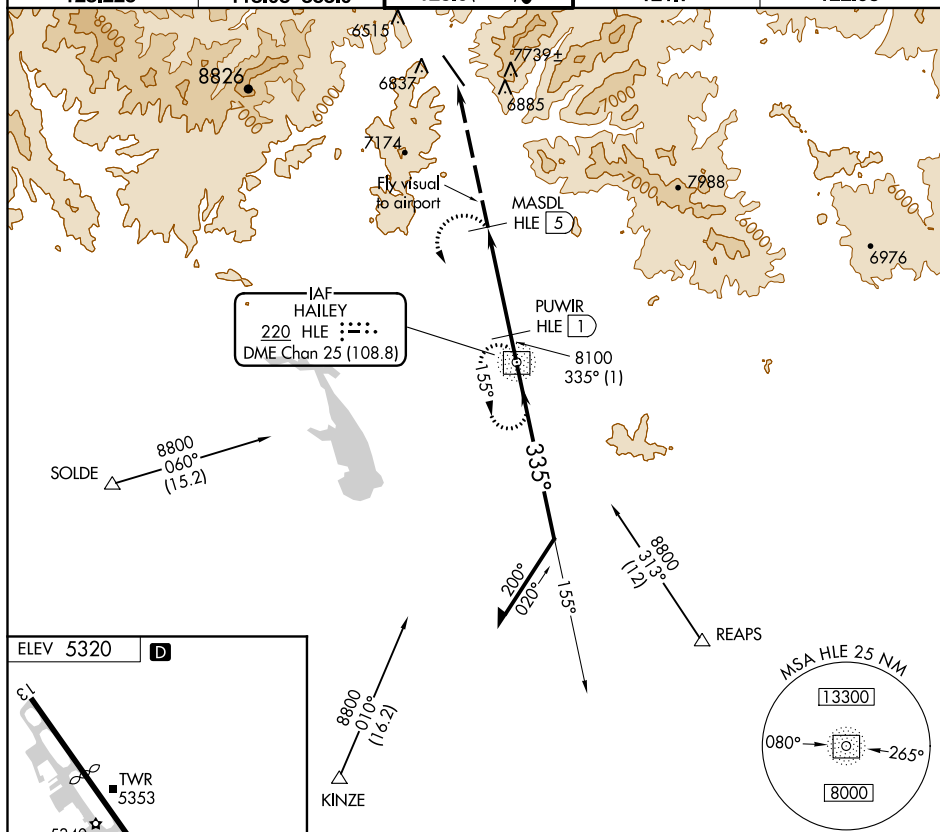


Diagram illustrating a Circling Approach (CIRCLING) for a Category C aircraft. The approach is defined by the following parameters:

- Category:** C (CIRCLING)
- Altitude:** 8040-5 (Initial), 2720 (2800-5) (Final)
- Distance:** 4 NM (from MASDL HLE 5), 1 NM (from PUVIR HLE 1)
- Angle:** 335° (Fly Visual), 155° (Remain within 10 NM)
- Fixes:** MASDL HLE 5, PUVIR HLE 1, HLE NDB/DME 8800
- Visual:** Fly Visual 335° 5.2 NM

HAILEY, IDAHO
Amdt 1 06FEB14

FRIEDMAN MEMORIAL (SUN)
NDB/DME-A

43°30'N-114°18'W

NW-1, 31 DEC 2020 to 28 JAN 2021

NW-1, 31 DEC 2020 to 28 JAN 2021