




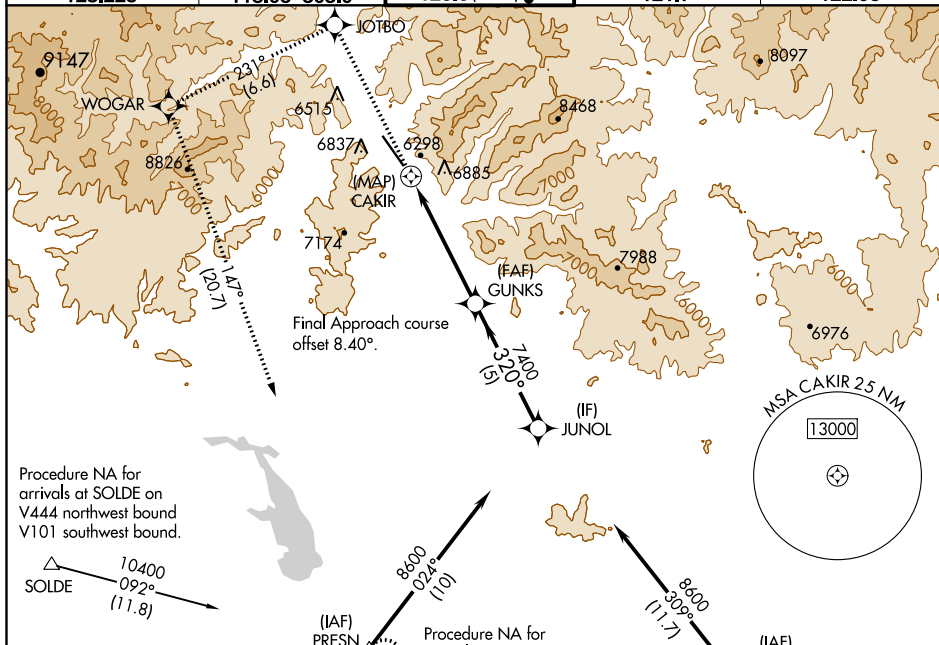
WAAS CH 77639 W31A	APP CRS 320°	Rwy Idg 6631 TDZE 5289 Apt Elev 5320
--	------------------------	---

RNAV (GPS) X RWY 31
FRIEDMAN MEMORIAL (SUN)

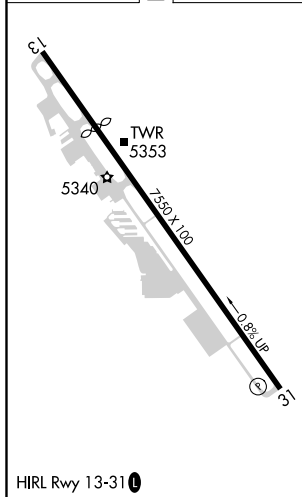
 DME/DME RNP-0.3 NA. Rwy 31
 helicopter visibility reduction below
 -14°C 1 SM NA.

MISSED APPROACH: (Do not exceed 185 KIAS until WOGAR) Climb to 10500 direct JOTBO and on track 231° to WOGAR and on track 147° to PRESN and hold. *Missed approach requires minimum climb of 420 feet per NM to 9500; if unable to meet climb gradient, see RNAV (GPS) Y RWY 31.

ATIS 128.225	SALT LAKE CENTER 118.05 363.0	HAILEY TOWER ★ 125.6 (CTAF) 0	GND CON 121.7	UNICOM 122.95
-----------------	----------------------------------	----------------------------------	------------------	------------------



ELEV 5320	D	TDZE 5289
-----------	----------	-----------



10500 ↑	JOTBO ✱	tr 231° ✱	WOGAR ✱	tr 147° △	PRESN △	7400 GUNKS		8600 JUNOL	
CATEGORY		A		B		C		D	
LP	MDA*	6180-1¼		891 (900-1¼)		6180-2½		891 (900-2½)	
LNAV	MDA*	6920-1¼ 1631 (1600-1¼)		6920-1½ 1631 (1600-1½)		6920-3		1631 (1600-3)	

RNAV (GPS) X RWY 31