

VORTAC BTG <u>116.6</u> Chan 113	APP CRS 255°	Rwy Idg TDZE Apt Elev	N/A N/A 58
--	------------------------	-----------------------------	---------------------------------------

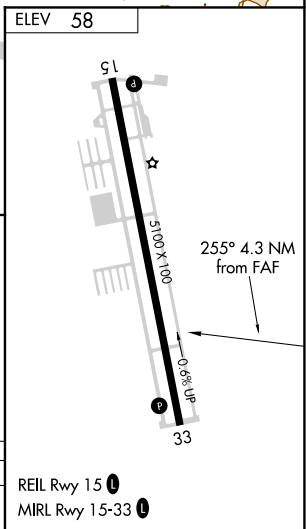
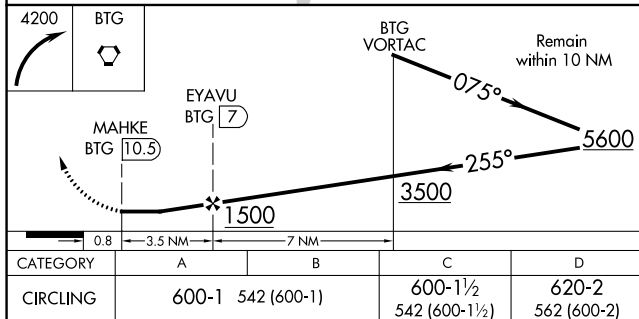
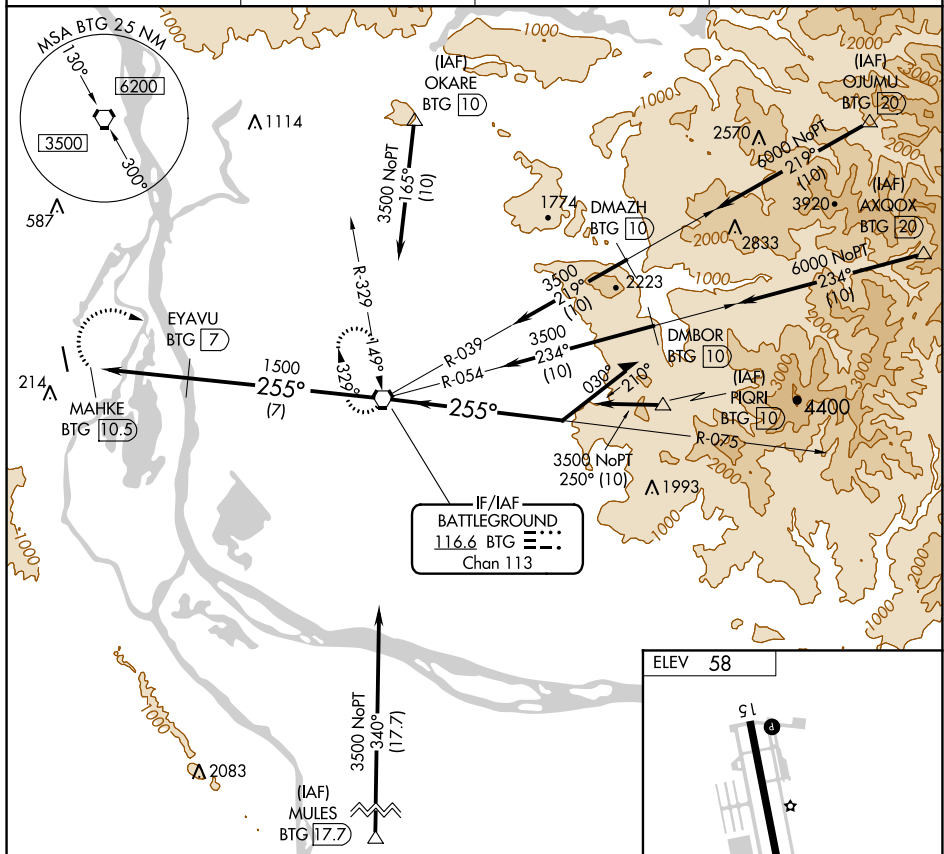
VOR/DME-A

SCAPPOOSE INDUSTRIAL AIRPARK (SPB)

V Circling NA west of Rwy 15-33. Helicopter visibility reduction below 1 SM NA.
A When local altimeter setting not received, use Portland Intl altimeter setting and increase all MDA 40 ft. Circling to Rwy 15 NA at night.

MISSED APPROACH: Climbing right turn to 4200 direct BTG VORTAC and hold, continue climb-in-hold to 4200.

ASOS 135.875	PORTLAND APP CON 124.35 299.2	CLINC DEL 121.65	UNICOM 122.8 (CTAF) 0
------------------------	---	----------------------------	---------------------------------



VOR/DME-A