

WAAS CH <b>58335</b> <b>W23A</b>	APP CRS <b>233°</b>	Rwy Idg TDZE Apt Elev	<b>5005</b> <b>273</b> <b>273</b>
--	------------------------	-----------------------------	---

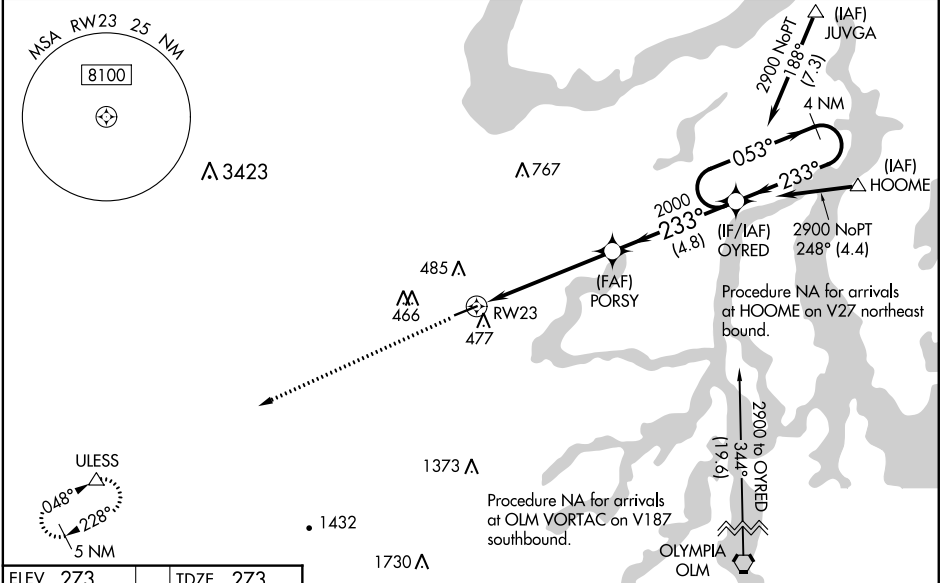
**RNAV (GPS) RWY 23**  
SANDERSON FIELD (SHN)

**RNP APCH.**

**⚠** For uncompensated Baro-VNAV systems, LNAV/VNAV NA below -10°C or above 54°C. Rwy 23 helicopter visibility reduction below ¾ SM NA. Baro-VNAV and VDP NA when using Olympia altimeter setting. Circling NA for Cats C and D south of Rwy 5-23. When local altimeter setting not received, use Olympia altimeter setting: increase #LPV DA to 576 feet, LPV DA to 720 feet, and LNAV/VNAV DA to 773 feet and all visibilities ¼ SM; increase all MDAs 60 feet and visibility LNAV Cat C and D and Circling Cat C visibility ½ SM. #LPV missed approach requires minimum climb of 244 feet per NM to 1700.

**MISSED APPROACH:**  
Climb to 3200 direct ULESS and hold.

ASOS <b>119.275</b>	SEATTLE APP CON <b>121.1 290.9</b>	UNICOM <b>122.8 (CTAF) 0</b>
------------------------	---------------------------------------	---------------------------------



ELEV 273 TDZE 273

3200 ULESS  
VGSI and RNAV glidepath not coincident (VGSI Angle 3.00/TCH 47).

\*LNAV only

RW23  
233° to RW23  
5005 X 100  
0.3% UP

PORSY  
2000  
1.8 NM to RW23  
3.5 NM  
4.8 NM  
OYRED  
2000  
233°  
053°  
2900  
4 NM Holding Pattern  
GP 3.00° TCH 59

CATEGORY	A	B	C	D
LPV DA#	523-¾ 250 (300-¾)			
LPV DA	667-1¼ 394 (400-1¼)			
LNAV/VNAV DA	720-1½ 447 (500-1½)			
LNAV MDA	880-1 607 (700-1)		880-1¾ 607 (700-1¾)	
<b>C</b> CIRCLING	880-1 607 (700-1)		880-1¾ 607 (700-1¾)	1200-3 927 (1000-3)