

WAAS CH 61038 W05A	APP CRS 053°	Rwy Idg TDZE 270 Apt Elev 273
--	------------------------	---

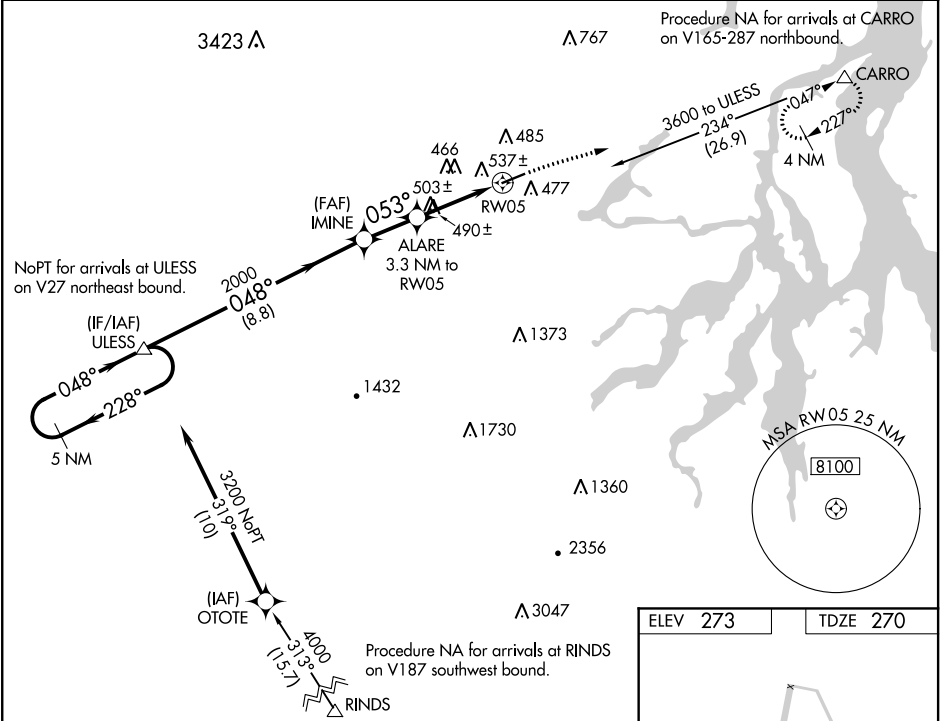
RNAV (GPS) RWY 5

SANDERSON FIELD (SHN)

DME/DME RNP-0.3 NA. Circling NA for Cats C and D south of Rwy 5-23. Helicopter visibility reduction below ¾ SM NA. When local altimeter setting not received, use Olympia altimeter setting and increase all MDA by 60 feet, increase LP and LNAV visibility Cats C, D and Circling Cat C visibility ½ mile.

MISSED APPROACH: Climb to 3000 direct CARRO and hold.

ASOS 119.275	SEATTLE APP CON 121.1 290.9	UNICOM 122.8 (CTAF) 0
------------------------	---------------------------------------	---------------------------------



Visual Segment - Obstacles.				
5 NM Holding Pattern				
3200 ← 228° 048° → 2000 048° 053° 1340 RW05				
8.8 NM 2 NM 3.3 NM				
CATEGORY	A	B	C	D
LP MDA	740-1	470 (500-1)	740-1½	470 (500-1½)
LNAV MDA	800-1	530 (600-1)	800-1½	530 (600-1½)
CIRCLING	840-1	567 (600-1)	840-1½	1200-3
			567 (600-1½)	927 (1000-3)

ELEV 273

TDZE 270

Diagram showing the runway (RW05) and approach path. Key features include:

- Runway:** RW05, 5005 x 100.
- Angles:** 03° UP, 053° to RW05.
- Obstacles:** 3000, CARRO.

REIL Rwy 23 0
MIRL Rwy 5-23 0