

WAAS CH 78202 W11A	APP CRS 110°	Rwy Idg TDZE 2537 Apt Elev 2537
--	------------------------	---

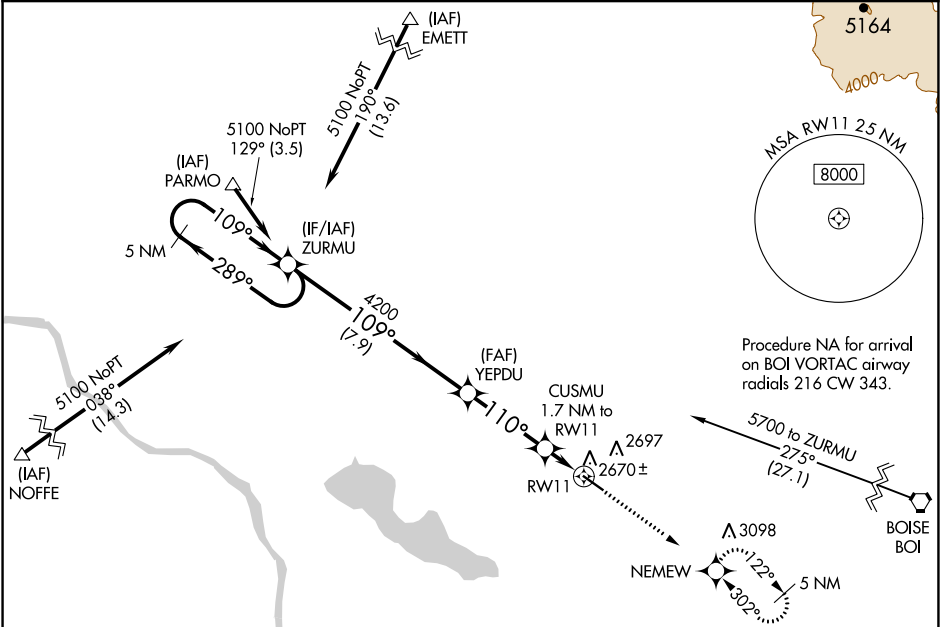
RNAV (GPS) RWY 11
NAMPA MUNI (MAN)

▼ For uncompensated Baro-VNAV systems, LNAV/VNAV NA below -20°C (-4°F) or above 54°C (130°F). When Circling to Rwy 29 at night, operational VGSI required, remain on or above VGSI glidepath until threshold. DME/DME RNP-0.3 NA.

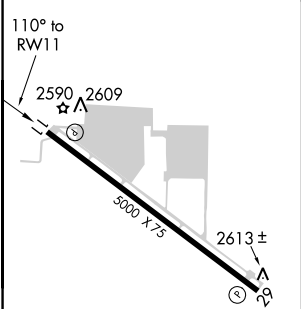
▲ Rwy 11 helicopter visibility reduction below ¾ SM NA.

MISSED APPROACH: Climb to 5100 direct NEMEW and hold, continue climb-in-hold to 5100.

AWOS-3 118.325	BIG SKY APP CON 119.6 269.4	UNICOM 122.7 (CTAF) 0
--------------------------	---------------------------------------	---------------------------------



ELEV 2537	TDZE 2537
------------------	------------------



5 NM Holding Pattern		ZURMU	YEPDU	CUSMU 1.7 NM to RW11	5100 ↑	NEMEW ✦
5100	←289° 109°→		4200	109° 4200	*1.1 NM to RW11	*LNAV only
GP 3.00° TCH 40		7.9 NM	3.4 NM	0.6 NM	1.1 NM	RW11
				*3100		
CATEGORY	A	B	C	D		
LPV DA	2787-7/8 250 (300-7/8)					
LNAV/ VNAV DA	2851-1 314 (400-1)					
LNAV MDA	2920-1	383 (400-1)	2920-1 1/8	383 (400-1 1/8)		
CIRCLING	3060-1	523 (600-1)	3100-1 1/2 563 (600-1 1/2)	3220-2 1/4 683 (700-2 1/4)		

NW-1, 31 DEC 2020 to 28 JAN 2021

NW-1, 31 DEC 2020 to 28 JAN 2021