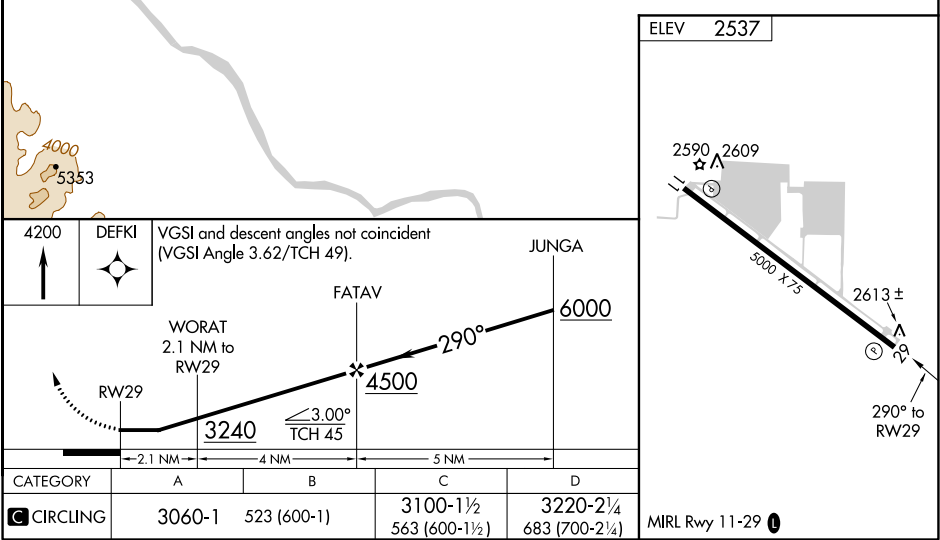
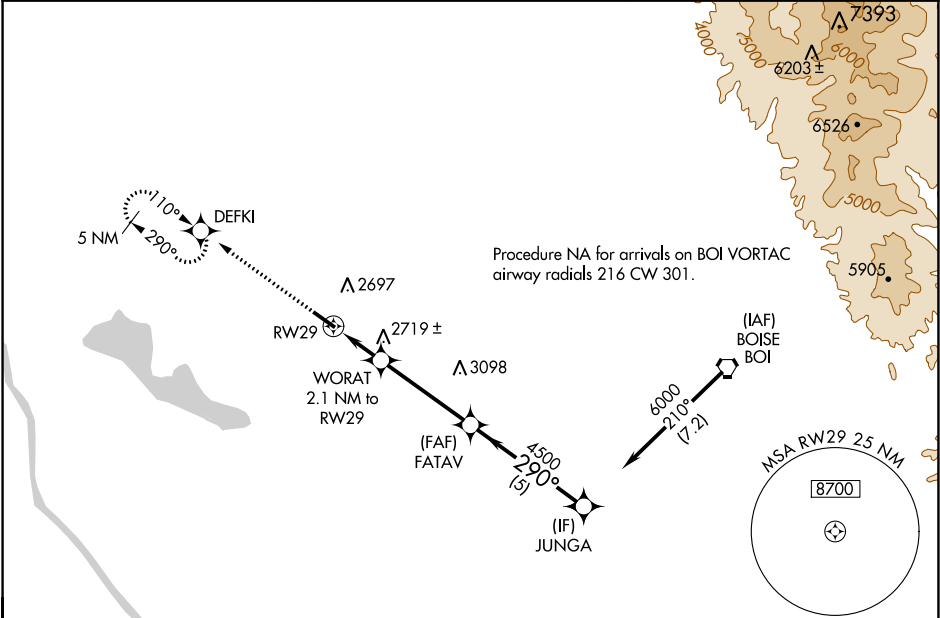


APP CRS	Rwy Idg	N/A
290°	TDZE	N/A
	Apt Elev	2537

RNAV (GPS)-B  
NAMPA MUNI (MAN)

<p><b>⚠</b> Night landing: Rwy 29, operational VGSI required, remain on or above VGSI glidepath until threshold. DME/DME RNP -0.3 NA. When local altimeter setting not received, use Caldwell Industrial altimeter setting and increase all MDA 40 feet and visibility Cat C ¼ SM. Helicopter visibility reduction below 1 SM NA.</p>	<p>MISSED APPROACH: Climb to 4200 direct DEFKI and hold.</p>
---	--

AWOS-3 118.325	BIG SKY APP CON 119.6 269.4	UNICOM 122.7 (CTAF) 0
-------------------	--------------------------------	--------------------------



NW-1, 31 DEC 2020 to 28 JAN 2021

NW-1, 31 DEC 2020 to 28 JAN 2021