

RNAV (GPS) RWY 9
JEROME COUNTY (JER)

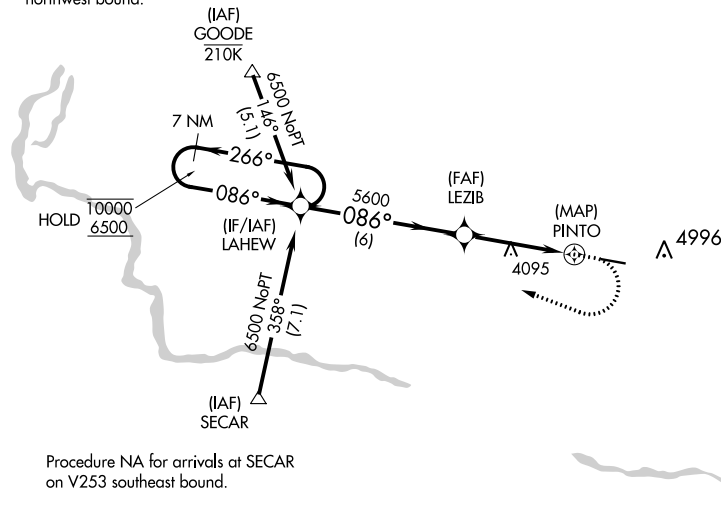
T
A

For uncompensated Baro-VNAV systems, LNAV/VNAV NA below -16°C or above 54°C. Circling NA north of Rwy 9-27.

MISSED APPROACH: (Do not exceed 185K until LAHEW) Climb to 4900 then climbing right turn to 6500 direct LAHEW and hold.
Missed approach requires minimum climb of 300 feet per NM to 5200.

UNICOM
122.8 (CTAF) **L**

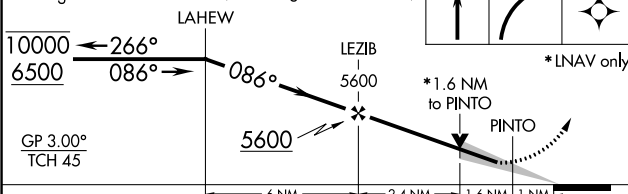
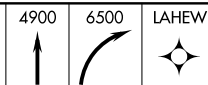
Procedure NA for arrivals at GOODE
on V4 northwest bound and V293
northwest bound.



Procedure NA for arrivals at SECAR
on V253 southeast bound.

TDZE 4019

7 NM Holding Pattern	VGSI and RNAV glidepath not coincident (VGSI Angle 3.00/TCH 40).
-------------------------	---



CATEGORY	A	B	C	D
LPV DA #	4544-1½ 525 (500-1½)			
LPV DA	4624-1¾ 605 (600-1¾)			
LNAV/ VNAV DA	4674-1⅞ 655 (700-1⅞)			
LNAV MDA	4820-1 801 (800-1)	4820-1¼ 801 (800-1¼)	4820-2½	801 (800-2½)
C CIRCLING	4820-1 767 (800-1)	4820-1¼ 767 (800-1¼)	4820-2½	767 (800-2½)

MIRL Rwy 9-27 **L**