


WAAS CH 77905 W23A	APP CRS 234°	Rwy Idg 7300 TDZE 7143 Apt Elev 7143
--	------------------------	---

RNAV (GPS) RWY 23
EVANSTON-UINTA COUNTY BURNS FIELD (E V W)

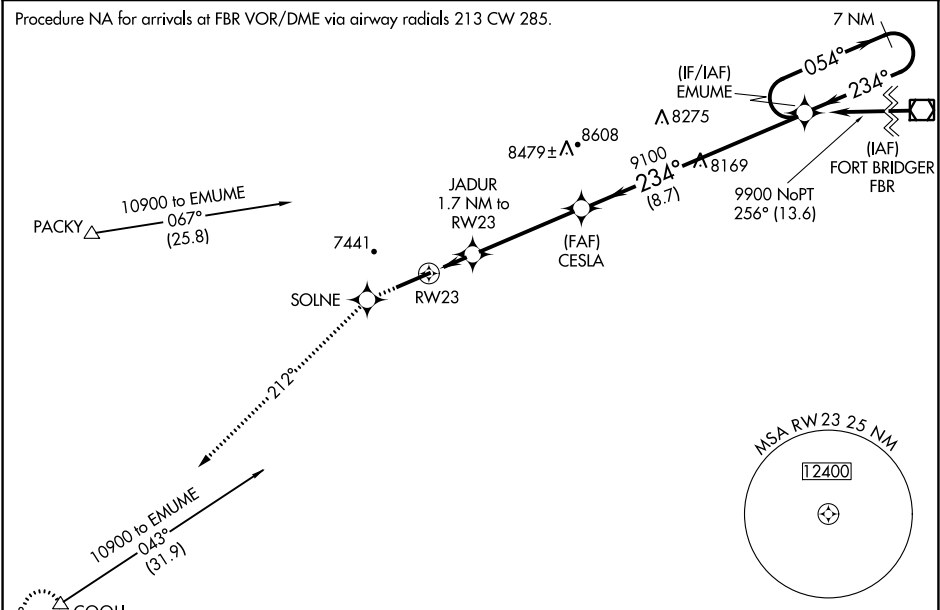
▼ For inoperative MALSR, increase LPV all Cats visibility to 1, LNAV/VNAV Cat D to 1 and LNAV Cat D to 1¼.
When local altimeter setting not received, procedure NA.
For uncompensated Baro-VNAV systems, LNAV/VNAV NA below -29°C (-20°F) or above 34°C (93°F). DME/DME RNP-0.3 NA.

MALSR

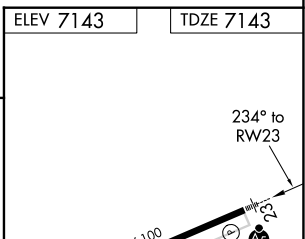


MISSED APPROACH: Climb to 12000 direct SOLNE and via 212° track to COOLI and hold, continue climb-in-hold to 12000.

ASOS 120.0	SALT LAKE CENTER 127.7 354.125	GCO 121.72	UNICOM 123.0 (CTAF) 0
----------------------	--	----------------------	---------------------------------

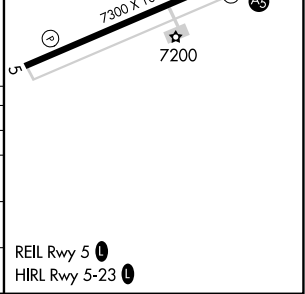


ELEV 7143 TDZE 7143



12000	SOLNE	212° tr	COOLI	CESLA	EMUME	7 NM Holding Pattern
*LNAV only						
*1.1 NM to RW23						
*1.7 NM to RW23						
7700						
GP 3.00° TCH 47						
1.1 NM 0.6 NM 4.2 NM 8.7 NM						
CATEGORY	A		B		D	
LPV DA	7393-1/2		250 (300-1/2)			
LNAV/VNAV DA	7443-1/2		300 (300-1/2)		7443-3/4 300 (300-3/4)	
LNAV MDA	7520-1/2		377 (400-1/2)		7520-1 377 (400-1)	
CIRCLING	7580-1 437 (500-1)		7720-1 577 (600-1)		7760-1 3/4 617 (700-1 3/4)	

REIL Rwy 5 0
HIRL Rwy 5-23 0



NW-1, 31 DEC 2020 to 28 JAN 2021

NW-1, 31 DEC 2020 to 28 JAN 2021