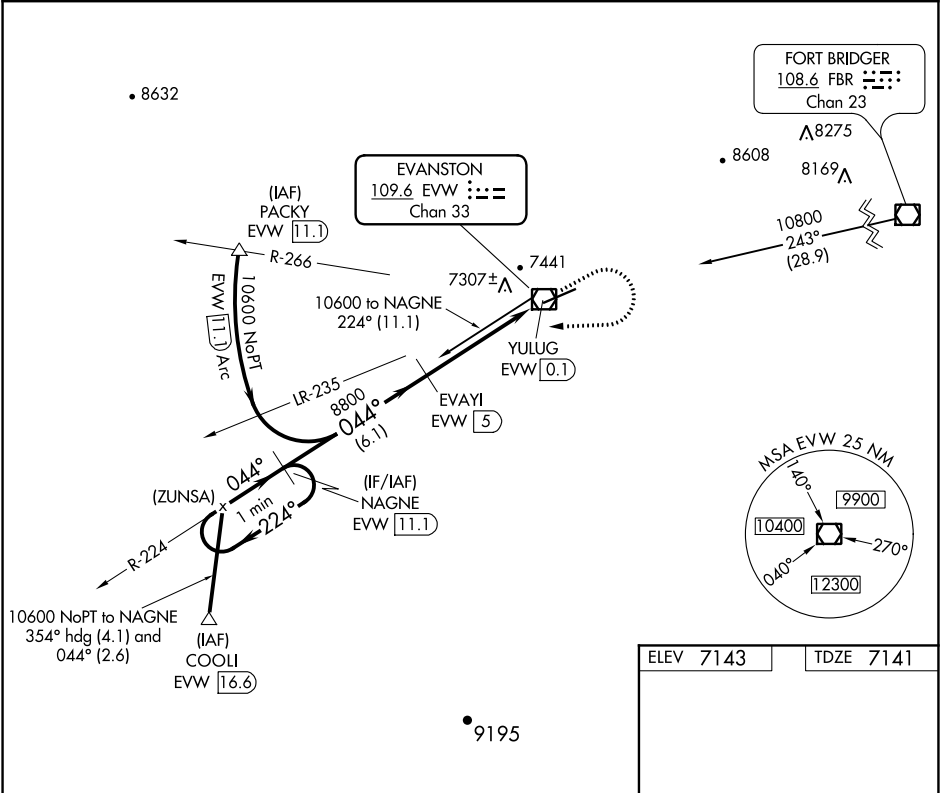


VOR/DME EVW	APP CRS	Rwy Idg	7300
109.6	044°	TDZE	7141
Chan 33		Apt Elev	7143

VOR/DME RWY 5

EVANSTON-UINTA COUNTY BURNS FIELD (E V W)

If local altimeter setting not received, procedure NA.		MISSED APPROACH: Climb to 7600, then climbing right turn to 10600 via heading 255° and EVW VOR/DME R-224 to NAGNE/11.1 DME and hold, continue climb-in-hold to 10600.	
ASOS	SALT LAKE CENTER	GCO	UNICOM
120.0	127.7 354.125	121.72	123.0 (CTAF) 0



One Minute Holding Pattern		NAGNE EVW 11.1	7600	10600	EVW R-224	NAGNE EVW 11.1
10600		224°	044°	044°	3.06° TCH 55	YULUG EVW 0.1
6.1 NM		3.8 NM	1.2 NM			
CATEGORY	A	B	C	D		
S-5	7560-1	419 (500-1)	7560-1 ¼	419 (500-1 ¼)		
CIRCLING	7580-1 437 (500-1)	7720-1 577 (600-1)	7760-1 ¾ 617 (700-1 ¾)	7760-2 617 (700-2)		

