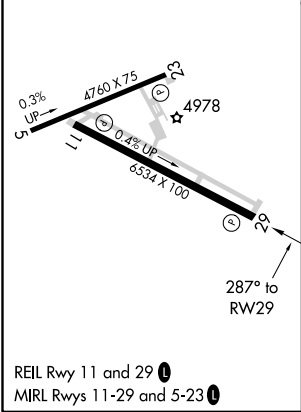
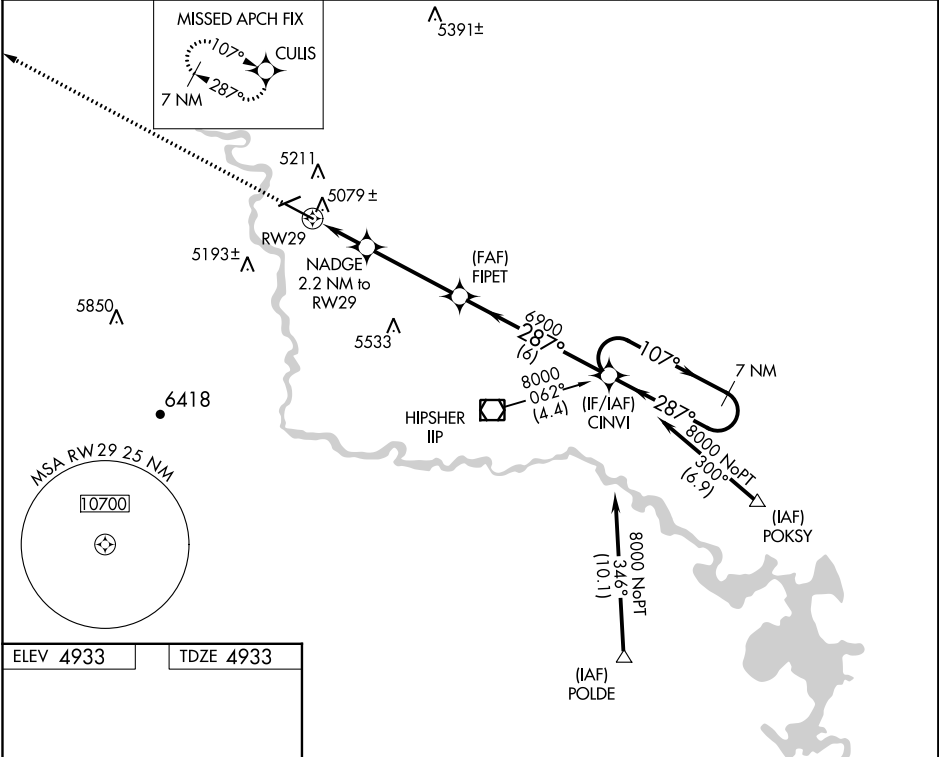


WAAS CH <b>61018</b> <b>W29A</b>	APP CRS <b>287°</b>	Rwy Idg <b>6534</b> TDZE <b>4933</b> Apt Elev <b>4933</b>
--	------------------------	---

**RNAV (GPS) RWY 29**  
CONVERSE COUNTY (DGW)

For uncompensated Baro-VNAV systems, LNAV/VNAV NA below -24°C (-11°F) or above 39°C (102°F). DME/DME RNP-0.3 NA.	MISSED APPROACH: Climb to 8000 direct CULIS and hold.
---	---

ASOS <b>135.225</b>	DENVER CENTER <b>135.6 363.025</b>	UNICOM <b>122.8 (CTAF) 0</b>
------------------------	---------------------------------------	---------------------------------



8000	CULIS	*LNAV only	NADGE 2.2 NM to RWY 29	FIPET 6900	CINVI	7 NM Holding Pattern
8000			*1.5 NM to RWY 29	5660*	6900	107° → 287° ← 8000
			1.5	0.7	3.8 NM	6 NM
CATEGORY	A	B	C	D		
LPV DA	5133-3/4	200 (200-3/4)				
LNAV/VNAV DA	5369-1 1/2	436 (500-1 1/2)				
LNAV MDA	5440-1	507 (600-1)	5440-1 1/2	507 (600-1 1/2)		
CIRCLING	5520-1	587 (600-1)	5520-1 1/2	587 (600-1 1/2)	5560-2	627 (700-2)