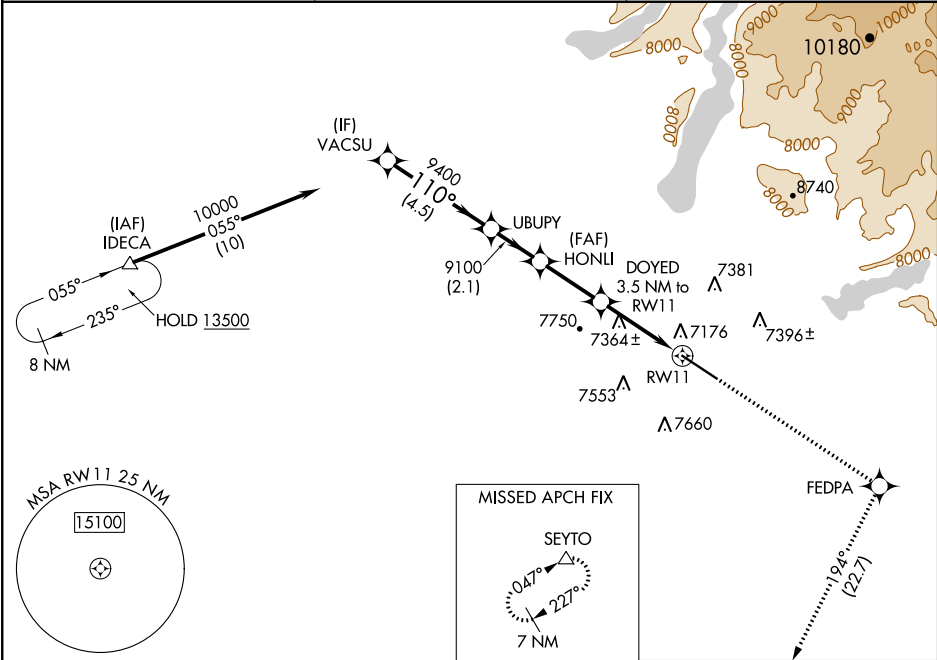


WAAS CH 58326 W11A	APP CRS 110°	Rwy Idg TDZE Apt Elev 8900 7096 7096
--	------------------------	--

RNAV (GPS) RWY 11
RALPH WENZ FIELD (PNA)

<p>▼ Baro-VNAV NA. When local altimeter setting not received, use Big Piney altimeter setting and increase all DA 58 feet and all MDA 60 feet; increase LPV and LNAV/VNAV all Cats, LNAV and Circling Cat C/D visibility ¼ mile. Circling NA south of Rwy 11/29. DME/DME RNP-0.3 NA. VDP NA with Big Piney altimeter setting.</p>	<p>ODALS</p>	<p>MISSED APPROACH: Climb to 10000 direct FEDPA and on track 194° to SEYTO and hold.</p>
---	--------------	--

AWOS-3 118.325	SALT LAKE CENTER 128.35 239.25	UNICOM 122.8 (CTAF) 0
--------------------------	--	---------------------------------



VGSIs and RNAV glidepath not coincident (VGSIs Angle 2.83/TCH 40).		10000 ↑		FEDPA ✧		tr 194° ↻		SEYTO △		ELEV 7096	TDZE 7096
VACSU		UBUPY		HONLI		DOYED 3.5 NM to RW11		*LNAV only.			
10000		9400		9100		*1.5 NM to RW11		RW11			
GP 3.00° TCH 55		4.5 NM		2.1 NM		2.6 NM		2 NM		1.5 NM	
CATEGORY	A	B		C		D					
LPV DA	7346-¾ 250 (300-¾)										
LNAV/ VNAV DA	7355-¾ 259 (300-¾)										
LNAV MDA	7620-1	524 (600-1)			7620-1½		524 (600-1½)				
CIRCLING	7620-1	524 (600-1)			7640-1½ 544 (600-1½)		7720-2 624 (700-2)				

110° to RW11

8900 X 100

0.3% UP

29

MIRL Rwy 11-29
REIL Rws 11 and 29

NW-1, 31 DEC 2020 to 28 JAN 2021

NW-1, 31 DEC 2020 to 28 JAN 2021