

WAAS CH <b>40426</b> <b>W29A</b>	APP CRS <b>291°</b>	Rwy Idg TDZE Apt Elev	<b>8900</b> <b>7078</b> <b>7096</b>
--	------------------------	-----------------------------	---

RNAV (GPS) RWY 29

RALPH WENZ FIELD (PNA)

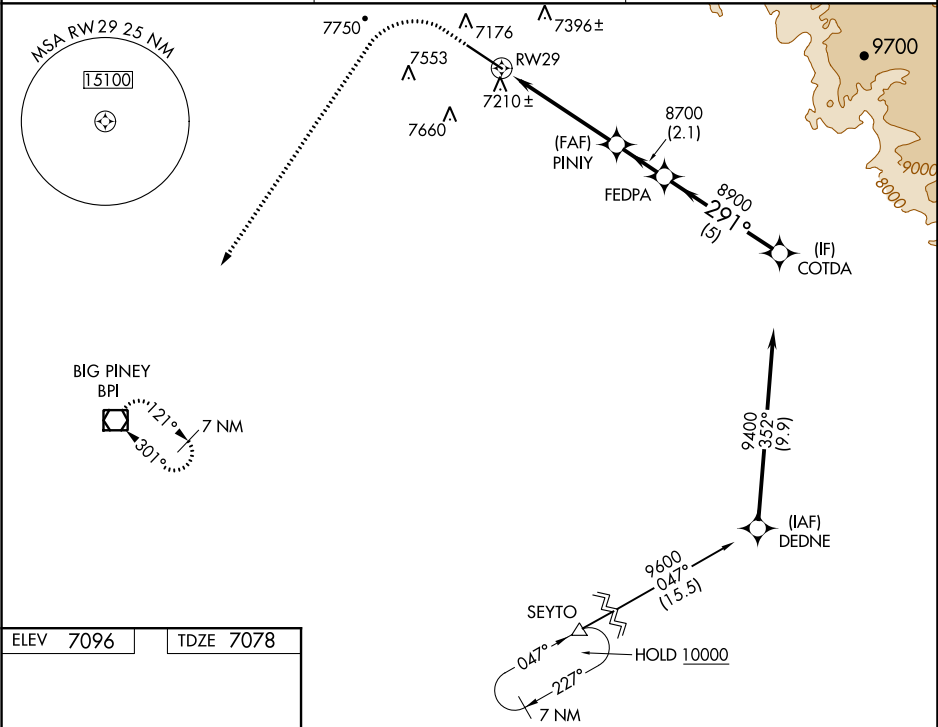
▼

Baro-VNAV NA. When local altimeter setting not received, use Big Piney altimeter setting and increase all DA 58 feet and all MDA 60 feet; increase LPV all Cats, LNAV and Circling Cat C/D visibility ¼ mile, and LNAV/VNAV all Cats visibility ⅛ mile. Circling NA south of Rwy 11/29. DME/DME RNP-0.3 NA. Helicopter visibility reduction below ¾ SM NA. VDP NA with Big Piney altimeter setting.

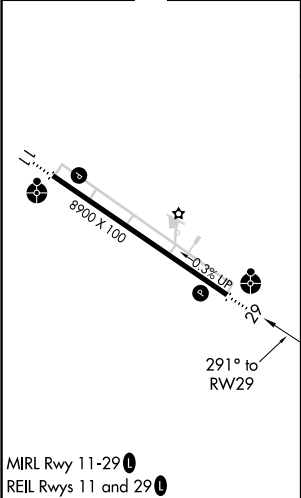
ODALS

MISSED APPROACH: Climb to 7600 then climbing left turn to 10000 direct BPI VOR/DME and hold.

AWOS-3 <b>118.325</b>	SALT LAKE CENTER <b>128.35 239.25</b>	UNICOM <b>122.8 (CTAF) 0</b>
--------------------------	--	---------------------------------



ELEV <b>7096</b>	TDZE <b>7078</b>
------------------	------------------



7600	10000	BPI	VGSI and RNP glidepath not coincident (VGSI Angle 2.83/TCH 40).		COTDA
*LNAV only.		*1.5 NM to RWY29	PINIY	FEDPA	COTDA
			8700	8900	9400
			291°	291°	291°
			1.5 NM	3.5 NM	2.1 NM
			5 NM		
			A	B	C
			D		
CATEGORY					
LPV DA			7328-¾	250 (300-¾)	
LNAV/VNAV DA			7606-1¾	528 (600-1¾)	
LNAV MDA			7600-1 522 (600-1)	7600-1½ 522 (600-1½)	
CIRCLING			7600-1 504 (600-1)	7640-1½ 544 (600-1½)	7720-2 624 (700-2)