

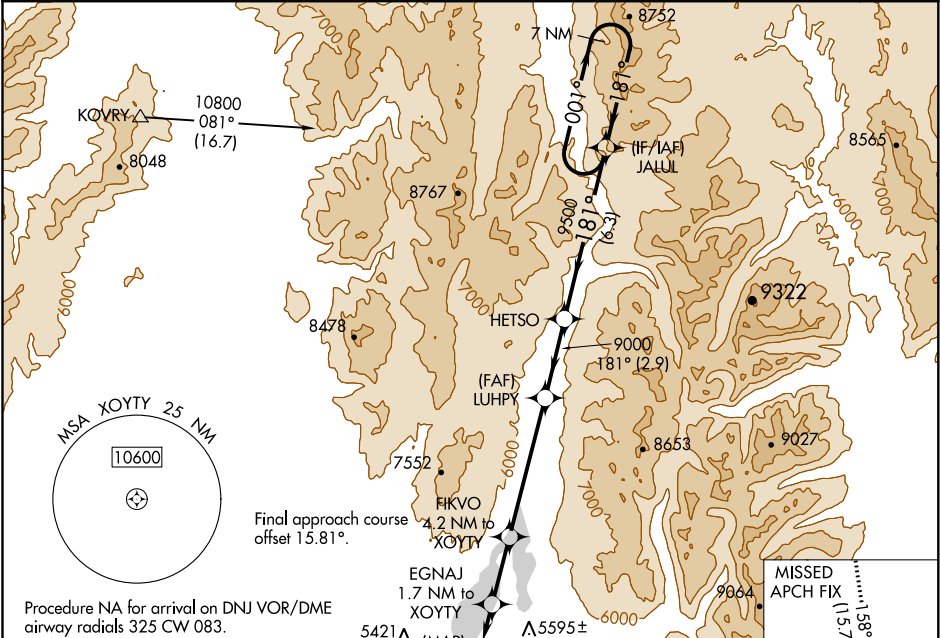
|             |          |             |
|-------------|----------|-------------|
| APP CRS     | Rwy Idg  | <b>6108</b> |
|             | TDZE     | <b>5024</b> |
| <b>181°</b> | Apt Elev | <b>5024</b> |

# RNAV (GPS) RWY 16

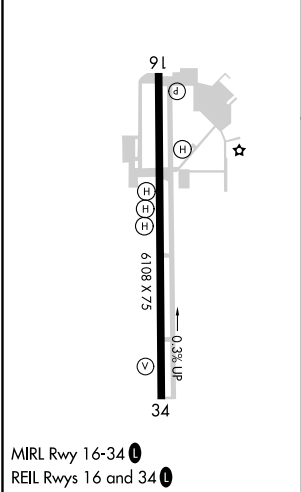
MC CALL MUNI (MYL)

|  |  |
|--|--|
| Rwy 16 helicopter visibility reduction below 1 SM NA.<br>DME/DME RNP-0.3 NA.<br>-20°C Straight-in Rwy 16 NA at night, Circling Rwy 16 NA at night. | MISSED APPROACH: Climb to 11700 direct UDABE and on track 158° to PEPUC and hold, continue climb-in-hold to 11700. |
|--|--|

|                        |  |                               |
|------------------------|--|-------------------------------|
| ASOS<br><b>119.925</b> | SALT LAKE CENTER<br><b>128.05 306.95</b> | UNICOM<br><b>122.8 (CTAF)</b> |
|------------------------|--|-------------------------------|



|           |           |
|-----------|-----------|
| ELEV 5024 | TDZE 5024 |
|-----------|-----------|



|  |                             |         |                            |    |   |
|--|-----------------------------|---------|----------------------------|----|---|
| <div>10800 to JALUL 006° (27.7)</div> <div>DONNELLY DNU</div> <div>(MAP) XOYTY</div> <div>5254±</div> <div>5129</div> <div>UDABE</div> <div>PEPUC</div> <div>7 NM</div> <div>3.00°</div> <div>1.60°</div> <div>Visual Segment - Obstacles.</div> <div>JALUL</div> <div>7 NM Holding Pattern</div>                                      |                             |         |                            |    |   |
| 11700  | UDABE                       | tr 158° | PEPUC                      |    |   |
|  |                             |         |                            |    |   |
| <div>XOYTY</div> <div>EGNAJ 4.2 NM to XOYTY</div> <div>1.7 NM to XOYTY</div> <div>FIKVO</div> <div>LUHPY</div> <div>HETSO</div> <div>9000</div> <div>9500</div> <div>181°</div> <div>001°</div> <div>181°</div> <div>10800</div> <div>0.5</div> <div>1.7</div> <div>2.5 NM</div> <div>5.1 NM</div> <div>2.9 NM</div> <div>6.3 NM</div> |                             |         |                            |    |   |
| CATEGORY   | A                           |         | B                          | C  | D |
| LNAV MDA   | 5520-1 496 (500-1)          |         | 5520-1 3/8 496 (500-1 3/8) | NA |   |
| CIRCLING   | 5940-1 1/4 916 (1000-1 1/4) |         | 6140-3 1116 (1200-3)       | NA |   |

NW-1, 31 DEC 2020 to 28 JAN 2021

NW-1, 31 DEC 2020 to 28 JAN 2021