

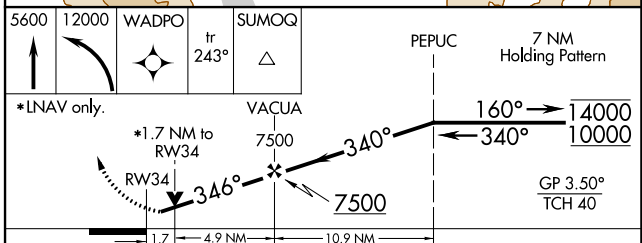
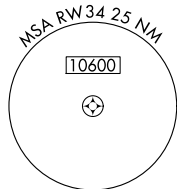
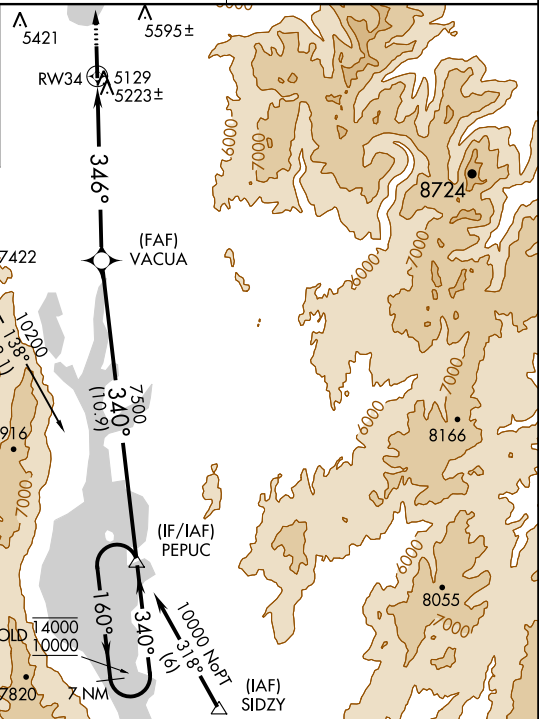



20254

RNAV (GPS) RWY 34  
MC CALL MUNI (MYL)

 For uncompensated Baro-VNAV systems, LNAV/VNAV NA below -23°C or above 40°C. Rwy 34 helicopter visibility reduction below  $\frac{3}{4}$  SM NA.  
 -20°C Circling Rwy 16 NA at night.

**MISSED APPROACH:** Climb to 5600 then climbing left turn to 12000 direct WADPO and on track 243° to SUMOQ and hold, continue climb-in-hold to 12000. #Missed approach requires minimum climb of 260 feet per NM to 6100.



CATEGORY		A	B	C	D
LPV	DA	5318-7/8		306 (300-7/8)	
LNAV/ VNAV	DA	5683-2		671 (700-2)	
LNAV MDA#		5520-1	508 (500-1)	5520-13/8	508 (500-13/8)
LNAV MDA		5680-1	668 (700-1)	5680-17/8	668 (700-17/8)
 CIRCLING		5700-1 676 (700-1)	5920-11/4 896 (900-11/4)	6140-3 1116 (1200-3)	6660-3 1636 (1700-3)

MC CALL MUNI (MYL)  
RNAV (GPS) RWY 34

NW-1, 31 DEC 2020 to 28 JAN 2021

NW-1, 31 DEC 2020 to 28 JAN 2021