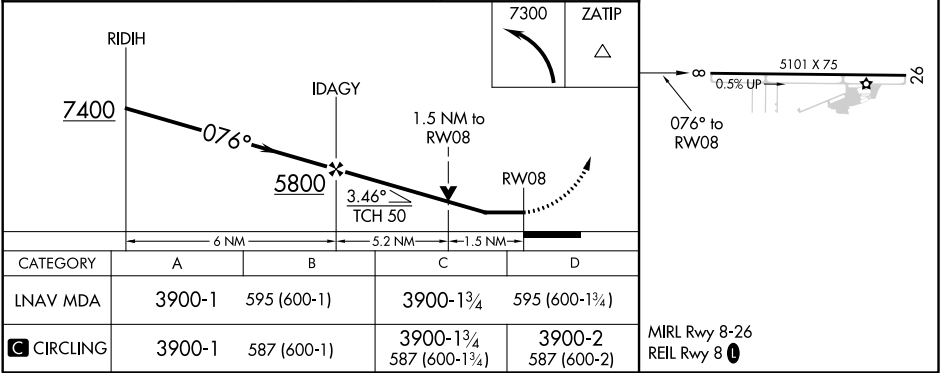
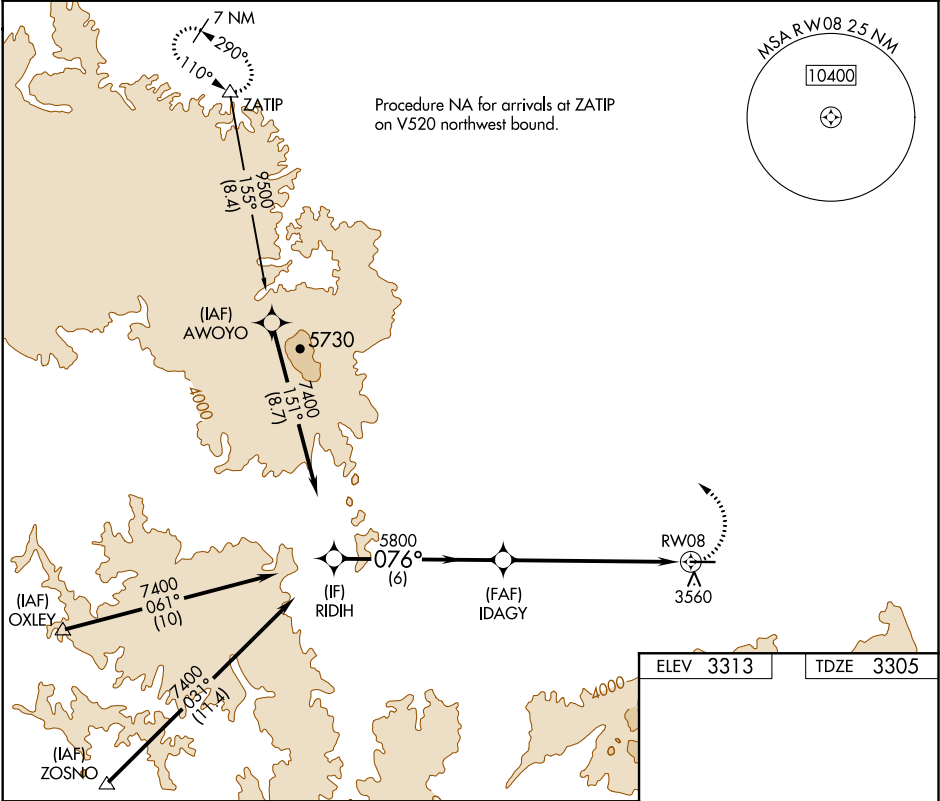


APP CRS	Rwy Idg	5101
076°	TDZE	3305
	Apt Elev	3313

RNAV (GPS) RWY 8
IDAHO COUNTY (GIC)

<p>⚠</p> <p>Circling NA south of Rwy 8-26. Rwy 8 Helicopter visibility reduction below ¾ SM NA. DME/DME RNP-0.3 NA.</p>	<p>MISSED APPROACH: Climbing left turn to 7300 direct ZATIP and hold.</p>
--	---

AWOS-3 118.175	SEATTLE CENTER 123.95 290.55	CTAF 122.8 0
-------------------	---------------------------------	------------------------



NW-1, 31 DEC 2020 to 28 JAN 2021

NW-1, 31 DEC 2020 to 28 JAN 2021